

InfiniRack Wall Mount Cabinet

The InfiniRack Wall Mount Cabinet is expertly engineered for high-performance networking environments where floor space is limited and security is essential. Designed with a three-piece swing-out structure, it is easily deployable with versatile configuration options and offers a robust set of features, making it ideal for IT professionals across industries.

APPLICATIONS

- **Systems:** Enterprise networking, A/V, security, point-of-sale, CCTV, fiber enclosures, Power-over-Ethernet (PoE), and a variety of IoT, industrial and edge systems.
- **Environments:** IT closets, telecom rooms, classrooms, offices, conference rooms, retail locations, and more.



KEY FEATURES

- **Three-Piece Swing-Out Design:** Includes front door, center chassis and rear chassis.
- **Simplified Installation:** Rear chassis is removable and mounts to the wall first; supports left or right hinge orientation.
- **Easy Access:** Innovative push-button latch behind front door to release the center chassis.
- **Security:** Tinted tempered glass on front door with keyed swing handle lock; additional, optional lock types available (combination, electronic, biometric).
- **Ventilation and Cooling:** Center chassis includes airflow vents and mount supports for an optional fan and filter kit.
- **Top/Bottom Cable Entry:** Includes knockouts for 2-1/2" and 3/4" trade size conduit and 7.7"W x 2.8"D (196 mm x 70 mm) rectangular knockouts (patent pending) for optional brush-sealed cable entry points.
- **Adjustable Mounting Rails:** One pair included; front-to-rear adjustable. Second pair available as an optional accessory.
- **Accessory Ecosystem:** Enhancements available for airflow, visibility, cable management and space optimization.



CONFIGURATION OPTIONS:

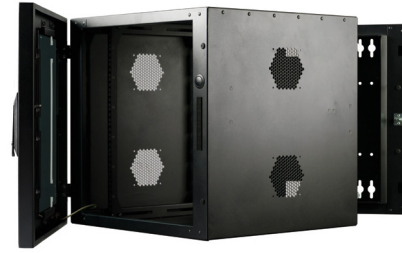
- **Spacing:** Standard 19" EIA rack mount design
- **Standard Heights:** 9U, 12U, 18U and 24U
- **Depths:**
 - **9U:** Only available in 18" (457 mm)
 - **12U, 18U, and 24U:** Available in 24" (610 mm) or 30" (762 mm)

INCLUDED COMPONENTS:

- One pair of adjustable mounting rails
- 25-pack of M6 cage nuts and screws
- Pair of door lock keys
- Digital owner's manual (via QR code)

SPECIFICATIONS AND CERTIFICATIONS:

- **Lock Type:** Standard swing handle keyed lock
- **Material:** CRS-1018
- **Certification:** UL Listed 2416
- **Finish:** Black powder coat (RAL 9005)



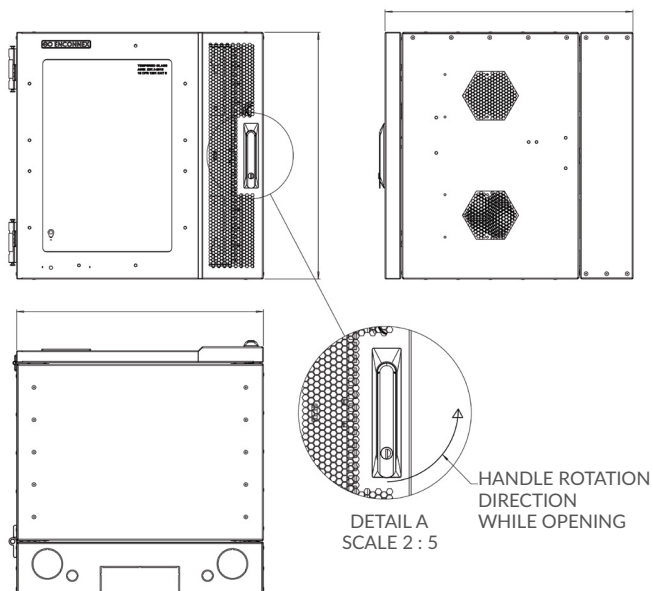
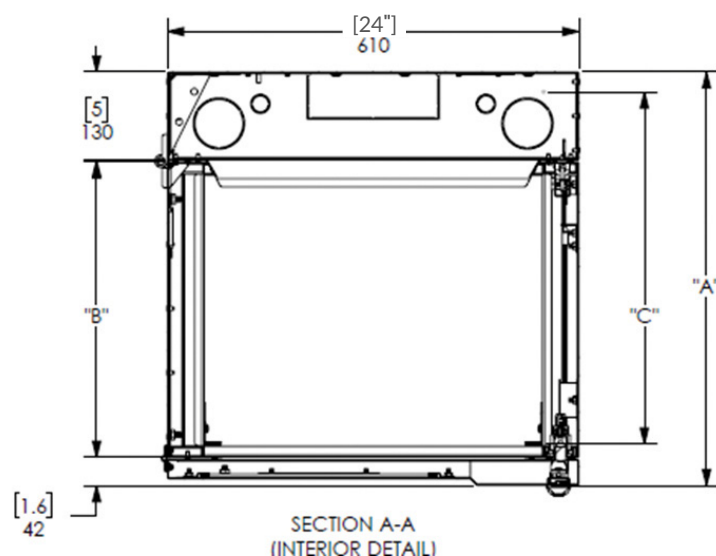
Part Number	Usable Height	Overall Dimensions (Width x Depth x Height)	Product Weight	Load Rating (UL Listed 2416)
E150018-09B	9U	24.0"W x 18.0"D x 18.8"H (610 mm x 457 mm x 476 mm)	67 lb (30.4 kg)	120 lb (55 kg)
E150024-12B	12U	24.0"W x 24.0"D x 24.0"H (610 mm x 610 mm x 610 mm)	88 lb (40.0 kg)	200 lb (91 kg)
E150030-12B	12U	24.0"W x 30.0"D x 24.0"H (610 mm x 762 mm x 610 mm)	99 lb (45.0 kg)	200 lb (91 kg)
E150024-18B	18U	24.0"W x 24.0"D x 34.5"H (610 mm x 610 mm x 876 mm)	111 lb (50.4 kg)	200 lb (91 kg)
E150030-18B	18U	24.0"W x 30.0"D x 34.5"H (610 mm x 762 mm x 876 mm)	123 lb (56.0 kg)	200 lb (91 kg)
E150024-24B	24U	24.0"W x 24.0"D x 45.0"H (610 mm x 610 mm x 1143 mm)	135 lb (61.1 kg)	200 lb (91 kg)
E150030-24B	24U	24.0"W x 30.0"D x 45.0"H (610 mm x 762 mm x 1143 mm)	147 lb (66.7 kg)	200 lb (91 kg)

Part Number	Overall Depth (A)	Center Chassis Depth (B)	Maximum Usable Depth (C)*
E150018-09B	18.0" (457 mm)	11.1" (282 mm)	14.0" (355 mm)
E150024-12B	24.0" (610 mm)	17.2" (438 mm)	20.0" (510 mm)
E150030-12B	30.0" (762 mm)	23.2" (590 mm)	26.0" (660 mm)
E150024-18B	24.0" (610 mm)	17.2" (438 mm)	20.0" (510 mm)
E150030-18B	30.0" (762 mm)	23.2" (590 mm)	26.0" (660 mm)
E150024-24B	24.0" (610 mm)	17.2" (438 mm)	20.0" (510 mm)
E150030-24B	30.0" (762 mm)	23.2" (590 mm)	26.0" (660 mm)

*Maximum assumes the front rails are in furthest forward position.

The data in the table above is represented on the technical drawing that follows (A, B, C).

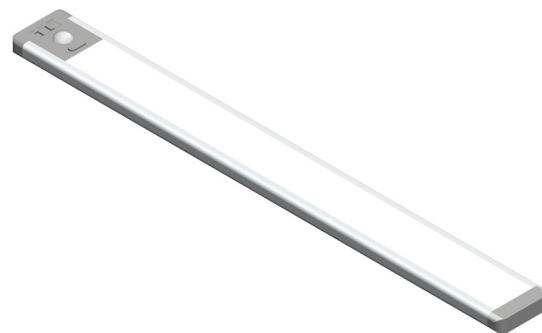
TECHNICAL DRAWING:



OPTIONAL ACCESSORIES

LED LIGHT KIT:

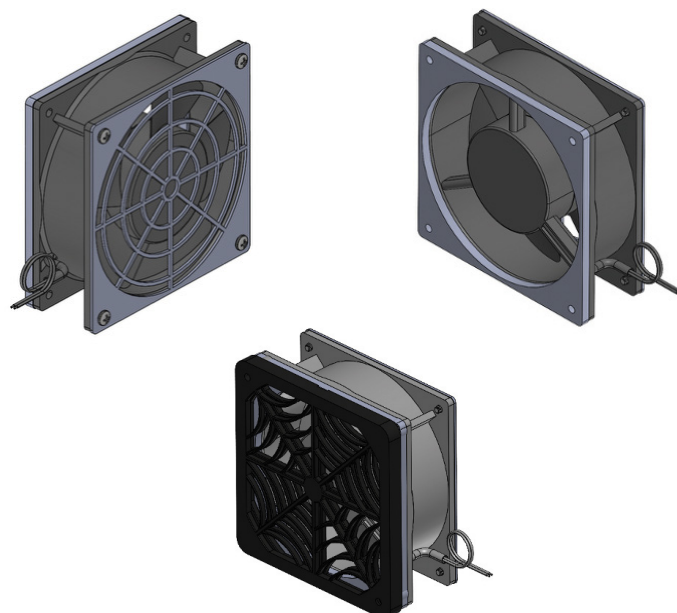
- Motion-activated and magnetically mounted
- Recommended mounting position is at the top of the top-front of the center chassis to illuminate equipment mounted on the front rails
- “On,” “Off” and “Auto” (motion-activated) modes
- Rechargeable internal battery allows it to run wirelessly. Includes USB-C cord and charger for continuous operation and recharging



Part Number	Specifications
E150001-000	LED Light Kit; 5 VDC; NEMA 1-15P Plug; One Each

FAN AND FILTER KIT:

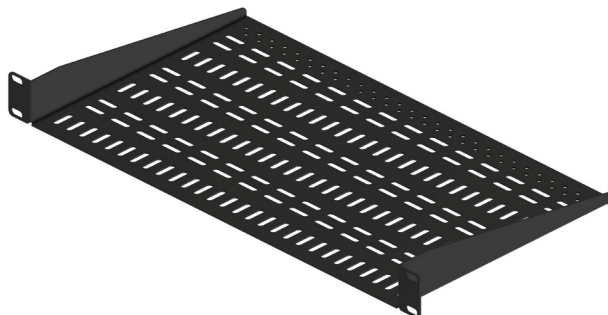
- Fan and filter kit expels warm air from the cabinet by pressurizing the interior of the cabinet
- Provides 102 CFM (2.88 CMM) of airflow
- Filter element mitigates dust accumulation
- Attaches to ventilated areas on the sides of the center chassis



Part Number	Specifications
E150002-00B	Fan and Filter Kit; 115 VDC 12W; 102 CFM (2.88 CM); 46dBA at 2800 RPM; 70.9"L (1.8 m) Power Cord with NEMA 1-15P Plug; One Each

UTILITY SHELF:

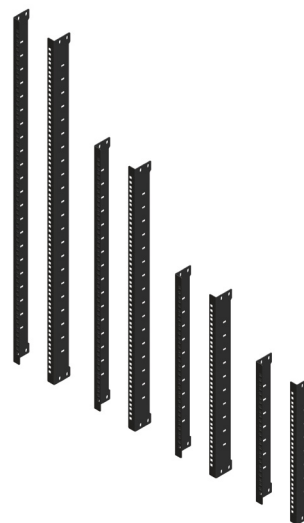
- Save space and organize in-rack equipment with our rack-mount utility shelf
- Cantilever design; 1U x 10.0" D (254 mm)
- Includes various tie down points



Part Number	Specifications
E150003-00B	Utility Shelf; 19" EIA x 10.0" D (254 mm); 1U; 18 lb (8 kg) Load-Rating; Black

VERTICAL MOUNTING RAIL KIT:

- Additional mounting rails are available for equipment that requires front and rear support
- Adjustable front-to-rear
- Sold as a pair
- Requires 8 each M6 cage nuts and screws for installation (sold separately)



Part Number	Specifications
E150004-00B	Vertical Mounting Rail Kit; 9U; Pair; Black
E150004-12B	Vertical Mounting Rail Kit; 12U; Pair; Black
E150004-18B	Vertical Mounting Rail Kit; 18U; Pair; Black
E150004-24B	Vertical Mounting Rail Kit; 24U; Pair; Black

REAR CHASSIS BRUSH KIT:

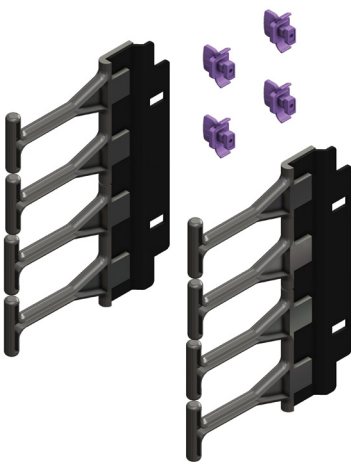
- For use when the rectangular knockout in the rear chassis is removed
- Provides edge protection to cable jackets and mitigates dust accumulation while effectively allowing cable entry/exit



Part Number	Specifications
E150005-00B	Rear Chassis Brush Kit; One Each; Black

VERTICAL CABLE MANAGER:

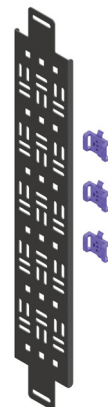
- Organizes cables in 1U increments
- Sold as a pair, each vertical cable manager section is 4U in height
- Attaches to the sides of the mounting rails with toolless fasteners



Part Number	Specifications
E150006-04B	Vertical Cable Manager; 4U; Short Finger; Pair; Black

CABLE LASHING PANEL:

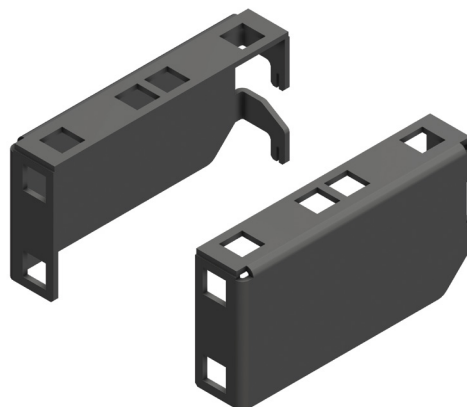
- Use to organize cables vertically and horizontally
- Attaches to the center chassis and is adjustable front-to-rear
- Each cable lashing panel includes three cable bundle clips for toolless and efficient organization of cables
- Additional cable bundle clips are available separately in packs



Part Number	Specifications
E150007-09B	Cable Lashing Panel; 3.75"W (95 mm); 9U; Black
E150007-12B	Cable Lashing Panel; 3.75"W (95 mm); 12U; Black
E150007-18B	Cable Lashing Panel; 3.75"W (95 mm); 18U; Black
E150007-24B	Cable Lashing Panel; 3.75"W (95 mm); 24U; Black
E140900-10P	Cable Bundle Clips; 90 Degree Turn; Pack of 10; Purple

90 DEGREE BRACKET KIT:

- Mounts to rear chassis
- Provides an additional 2U (horizontally) or 1U (vertically) of rack-mount space for PDUs or patch panels without taking up rack space in the center chassis



Part Number	Specifications
E150008-02B	90 Degree Bracket Kit 2U x 1U; 19" EIA; Black

CAGE NUT AND SCREW HARDWARE PACK:



Part Number	Specifications
E019000-50B	Cage Nut and Screw Hardware Pack; M6 x 12; Pack of 50; Black Zinc Plate

Contact your Enconnex sales representative or email sales@enconnex.com to request a quote.