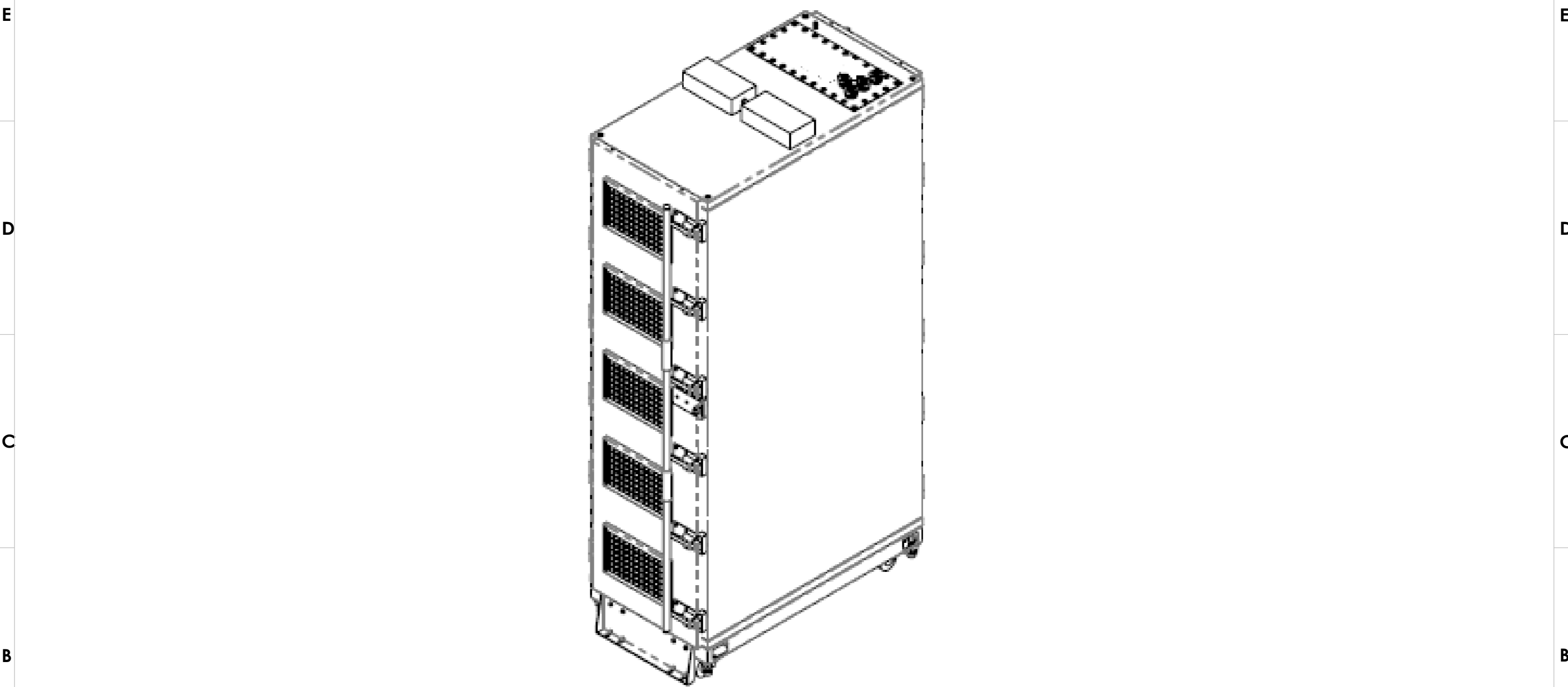



8 7 6 5 4 3 2 1

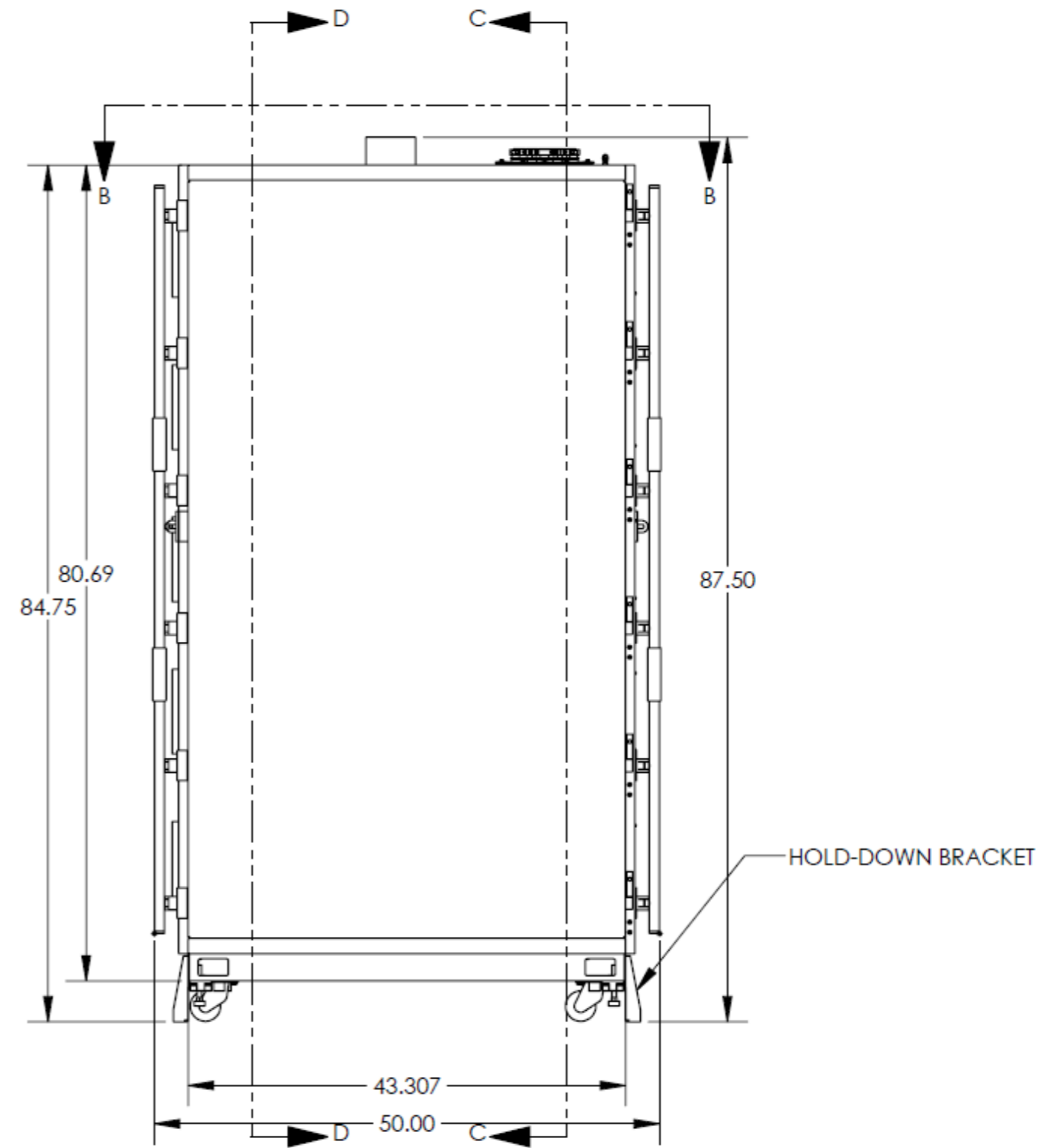
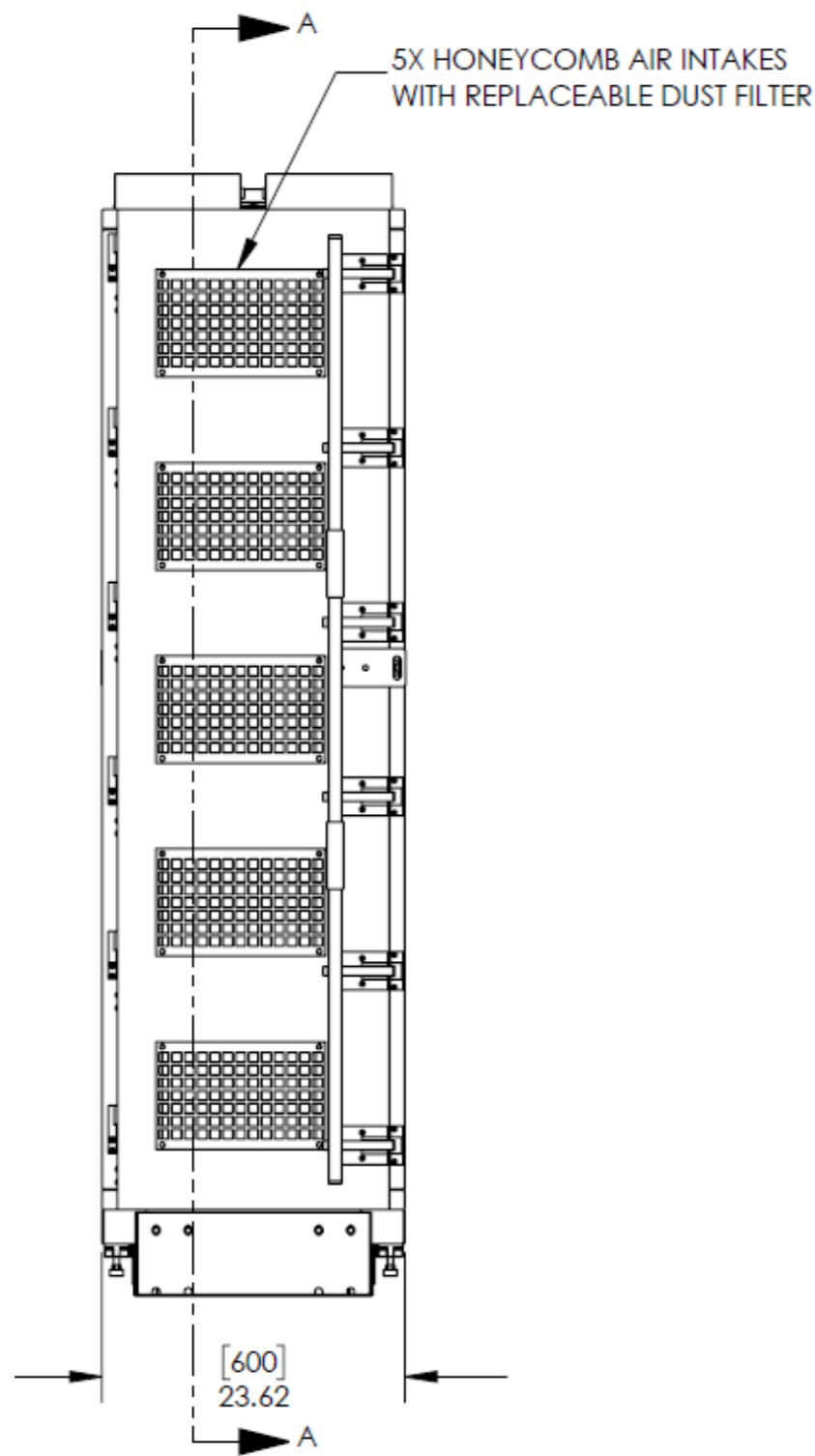
- NOTES:**
 1. CAD CONTROLS DESIGN
 2. KITTING
 a. 10 FT POWER CORD



<p>PROPRIETARY AND CONFIDENTIAL</p> <p>This drawing and its specifications are the property of ENCONNEX and shall not be copied, reproduced, or used in whole or in part, as the basis for the manufacture or sale of items without written permission from ENCONNEX. This drawing is based upon the latest available information and is subject to change without notice.</p>	<p>UNLESS OTHERWISE SPECIFIED</p> <p>X = ± 1 X.X = ± 0.5 X.XX = ± 0.30 X.XXX = ± 0.130 ANGULAR X = 1° .X = 0.5° .XX = 0.25°</p>		 4670 AIRCENTER CIRCLE RENO, NV 89502	<p>DESCRIPTION:</p> <p>DefenseShield 42U; IEC60309 3P+N+PE 6hr Red 32A 240/415V inlets and outlets; I/O Panel 4 Waveguides</p>						
	<p>COMMENTS:</p>			<p>MATERIAL:</p>		<p>FINISH:</p>		<p>CLASS:</p>	<p>SIZE: A3</p>	<p>DRAWING NO: ECX-RFC-61342-020</p>
	<p>DRAWN BY: K PARAB 10/28/2021</p> <p>APP. BY: R FAULKNER 10/28/2021</p>		<p>DEBURR AND BREAK SHARP EDGES/CONTOURS AT 0.2mm MAX</p>		<p>SCALE: N/A</p>		<p>WEIGHT:</p>		<p>SHEET: 1 OF 4</p>	
	<p>UNITS: mm [in]</p>		<p>INTERPRET TO ASME Y14.100</p>		<p>SCALE: N/A</p>		<p>WEIGHT:</p>		<p>SHEET: 1 OF 4</p>	

8 7 6 5 4 3 2 1

NOTES:



<p>PROPRIETARY AND CONFIDENTIAL</p> <p>This drawing and its specifications are the property of ENCONNEX and shall not be copied, reproduced, or used in whole or in part, as the basis for the manufacture or sale of items without written permission from ENCONNEX. This drawing is based upon the latest available information and is subject to change without notice.</p>	<p>UNLESS OTHERWISE SPECIFIED</p> <p>X = ± 1 X.X = ± 0.5 X.XX = ± 0.30 X.XXX = ± 0.130 ANGULAR X = 1° X = 0.5° .XX = 0.25°</p>		<p>4670 AIRCENTER CIRCLE RENO, NV 89502</p>	<p>DESCRIPTION:</p> <p>DefenseShield 42U; IEC60309 3P+N+PE 6hr Red 32A 240/415V inlets and outlets; I/O Panel 4 Waveguides</p>		
	<p>COMMENTS:</p>			<p>MATERIAL:</p>		<p>FINISH:</p>
	<p>DRAWN BY: K PARAB</p>	<p>DATE: 10/28/2021</p>	<p>CLASS:</p>	<p>SIZE: A3</p>	<p>DRAWING NO: ECX-RFC-61342-020</p>	<p>REV NO: 2</p>
	<p>APP. BY: R FAULKNER</p>	<p>DATE: 10/28/2021</p>	<p>DEBURR AND BREAK SHARP EDGES/CONTOURS AT 0.2mm MAX</p>	<p>SCALE: N/A</p>	<p>WEIGHT:</p>	<p>SHEET: 2 OF 4</p>
<p>UNITS: mm [in]</p>			<p>INTERPRET TO ASME Y14.100</p>			

NOTES:

ORACLE PDU SHOWN FOR REFERENCE
(NOT INCLUDED)

1X CUSTOM PDU MOUNT EACH SIDE

32A 400V POWER FILTER
IEC 60309 OUTSIDE (888-231-NS)
IEC 60309 INTERNAL (888-331-NS)

42U ADJUSTABLE RAILS
WITH SQUARE HOLES

FAN RELAY
FOR POWER REDUNDANCY

CASTERS AND
LEVELING FEET

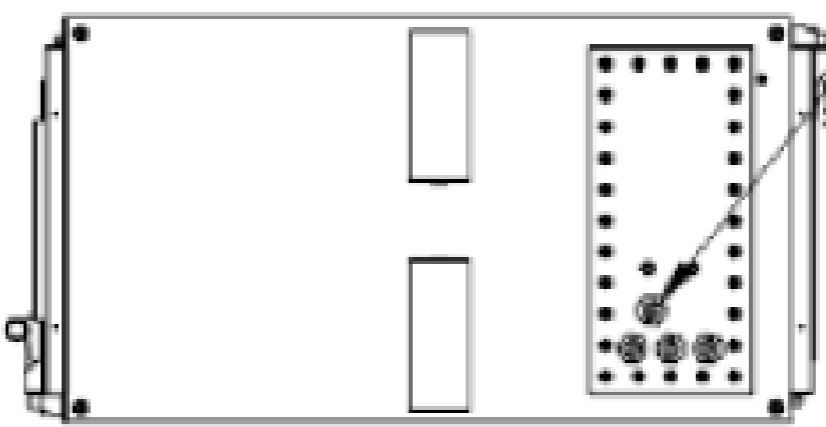
ALTERNATIVE POWER LOCATION

VIEW A-A

VIEW B-B

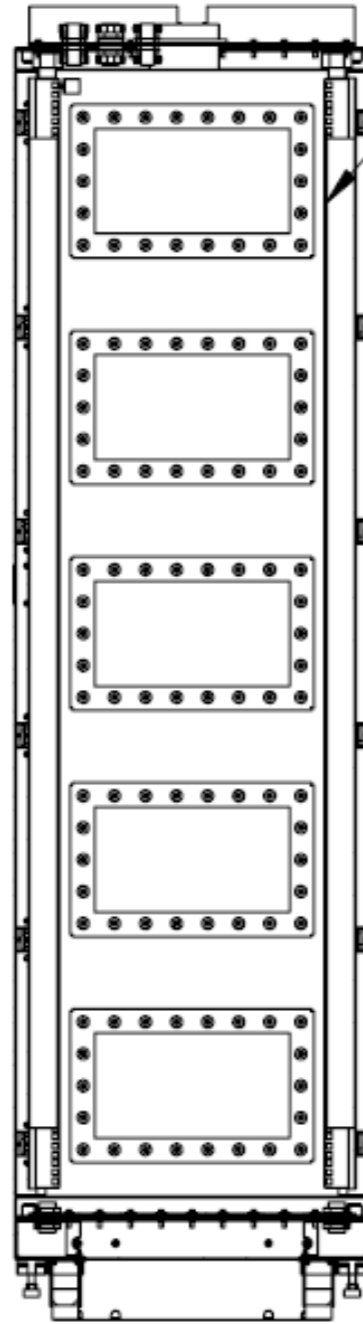
VIEW B-B

4X SPLITFORM WAVEGUIDES



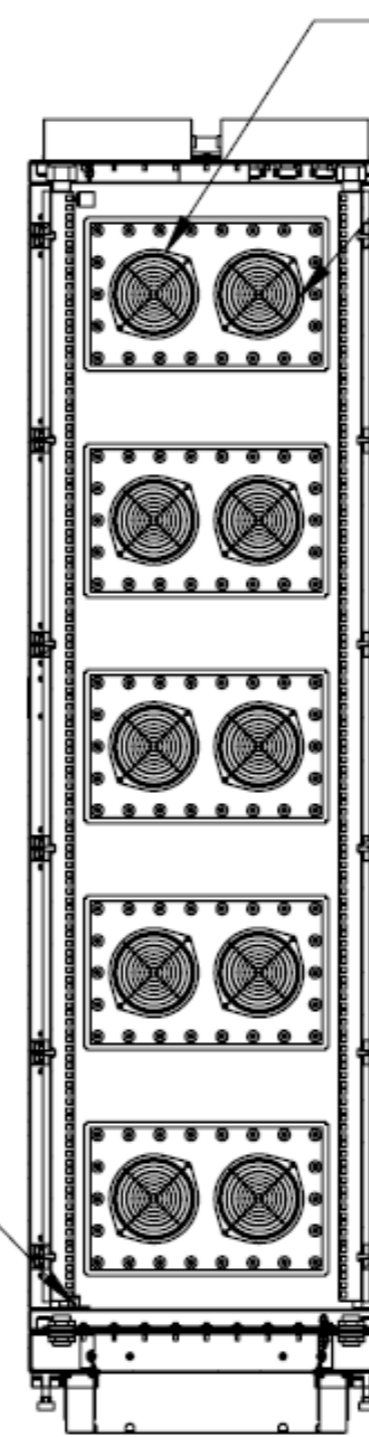
<p>PROPRIETARY AND CONFIDENTIAL</p> <p>This drawing and its specifications are the property of ENCONNEX and shall not be copied, reproduced, or used in whole or in part, as the basis for the manufacture or sale of items without written permission from ENCONNEX. This drawing is based upon the latest available information and is subject to change without notice.</p>	<p>UNLESS OTHERWISE SPECIFIED</p> <p>X = ± 1 X.X = ± 0.5 X.XX = ± 0.30 X.XXX = ± 0.130 ANGULAR X = 1° X = 0.5° .XX = 0.25°</p>		<p>4670 AIRCENTER CIRCLE RENO, NV 89502</p>	<p>DESCRIPTION:</p> <p>DefenseShield 42U; IEC60309 3P+N+PE 6hr Red 32A 240/415V inlets and outlets; I/O Panel 4 Waveguides</p>		
	<p>COMMENTS:</p>			<p>MATERIAL:</p>		<p>FINISH:</p>
	<p>DRAWN BY: K PARAB</p>	<p>DATE: 10/28/2021</p>	<p>CLASS:</p>	<p>SIZE: A3</p>	<p>DRAWING NO: ECX-RFC-61342-020</p>	<p>REV NO: 2</p>
	<p>APP. BY: R FAULKNER</p>	<p>DATE: 10/28/2021</p>	<p>DEBURR AND BREAK SHARP EDGES/CONTOURS AT 0.2mm MAX</p>		<p>SCALE: N/A</p>	<p>WEIGHT:</p>
<p>UNITS: mm [in]</p>			<p>INTERPRET TO ASME Y14.100</p>			

NOTES:



VIEW C-C

42U RAILS WITH SQUARE HOLES RACK UNIT LABELS



VIEW D-D

10X 235 CFM EXHAUST FANS

FAN HARNESS WITH GROUND

DOOR SENSOR DE-ENERGIZES FANS WHEN DOOR OPENS

<p>PROPRIETARY AND CONFIDENTIAL</p> <p>This drawing and its specifications are the property of ENCONNEX and shall not be copied, reproduced, or used in whole or in part, as the basis for the manufacture or sale of items without written permission from ENCONNEX. This drawing is based upon the latest available information and is subject to change without notice.</p>	<p>UNLESS OTHERWISE SPECIFIED</p> <p>X = ± 1 X.X = ± 0.5 X.XX = ± 0.30 X.XXX = ± 0.130 ANGULAR X = 1° X = 0.5° .XX = 0.25°</p>		<p>4670 AIRCENTER CIRCLE RENO, NV 89502</p>	<p>DESCRIPTION:</p> <p>DefenseShield 42U; IEC60309 3P+N+PE 6hr Red 32A 240/415V inlets and outlets; I/O Panel 4 Waveguides</p>			
	<p>COMMENTS:</p>			<p>MATERIAL:</p>		<p>FINISH:</p>	<p>CLASS:</p>
		<p>DRAWN BY: K PARAB</p> <p>APP. BY: R FAULKNER</p>	<p>DATE: 10/28/2021</p> <p>DATE: 10/28/2021</p>	<p>DEBURR AND BREAK SHARP EDGES/CONTOURS AT 0.2mm MAX</p>	<p>SIZE: A3</p>	<p>DRAWING NO: ECX-RFC-61342-020</p>	<p>REV NO: 2</p>
	<p>UNITS: mm [in]</p>			<p>INTERPRET TO ASME Y14.100</p>	<p>SCALE: N/A</p>	<p>WEIGHT:</p>	<p>SHEET: 4 OF 4</p>