



Containment Catalog | 2022

Table of Contents

TABLE OF CONTENTS	1
INTRODUCTION	2
CONTAINMENT - GENERAL	3
CONTAINMENT - FREESTANDING SYSTEM	4
CONTAINMENT ACCESSORIES - DUAL SLIDING DOORS	6
CONTAINMENT ACCESSORIES - TILT WINDOW SYSTEM	8
CONTAINMENT ACCESSORIES - SUPPORT PANELS	10
CONTAINMENT ACCESSORIES - FIXED PANEL FOR TILT WINDOW	12
CONTAINMENT ACCESSORIES - DROP AWAY PANEL	13
CONTAINMENT ACCESSORIES - INFILL PANEL	15

Introduction

With aisle containment, Enconnex offers complete data center infrastructure solutions. Our server cabinets, PDUs, UPSs, power cords, network connectivity products, and aisle containment solutions integrate seamlessly with each other to enable maximum performance and reliability.

CONTAINMENT CONFIGURATION

When it comes to aisle containment, one size does not fit all. We understand that every data center environment comes with unique challenges and specifications. For that reason, we take a building block approach to aisle containment. Our team of engineers will work with you to configure the right solution for your environment.



Figure 1: Containment Hallway

ENCONNEX CONTAINMENT BENEFITS

- Quick Deployment - Only a 2-4 week lead time for standard projects. Easy to assemble on-site.
- Cost-Effective - Multiple configuration options available to suit your budget.
- Built to Spec - Our engineers build solutions tailored to your unique environment.
- Complete Solution - All Enconnex products work together seamlessly. Bundle containment with cabinets, PDUs, etc. to save time and maximize performance.
- Flexible Solutions - Variety of product configurations available to suit your needs. Multiple options for both hot and cold aisle containment.
- Robust Customization and Support - If your environment has unique requirements or you run into any issues, our team of engineers can consult free of charge.

CERTIFICATIONS

- Twin-wall Polycarbonate Material (used in Tilt Window and Sliding Door)
 - CoC (Certificate of Conformity) in Singapore
 - E84 & UL94 Certifications in the United States
 - Euroclass Rating B-s1-d0
 - Flame Class V-0 (ASTM E84)
- Rigid Vinyl Material (used in Drop Away Roof Panels):
 - UL Listed Materials
 - NFPA Compliant
 - Class A Fire Rating
 - Euroclass Rating B-s2-d0
 - Flame Class V-0 (ASTM E84)
 - Indoor Air Quality GREENGUARD Gold Certified
- PC Solid Panel (Used in the Sliding Door):
 - E84 & UL94 Certification

Containment

Enconnex hot and cold aisle containment systems work by isolating chilled supply air from hot exhaust air. They increase cooling efficiency by focusing the cooler air on the equipment intakes. Aisle containment contributes to energy savings by allowing operators to increase the supply air and chilled water loop set temperatures. It also protects sensitive equipment by eliminating hotspots and improving the overall cooling potential of data center air conditioning units.

PRODUCT APPLICATIONS

- Data Centers
- High-Density Applications
- Energy Rebate Programs

PRODUCT FEATURES

- Customizable design
- Fits any energy savings plan
- Eliminates hot and cold air mixing
- Works in both raised floor and slab environments
- Increases cooling capacity and airflow
- Less investment, yielding more savings
- Maximizes data center cooling efficiencies
- Multiple door sizes
- Multiple roof options
- Panel selection
- Security options
- Additional accessories

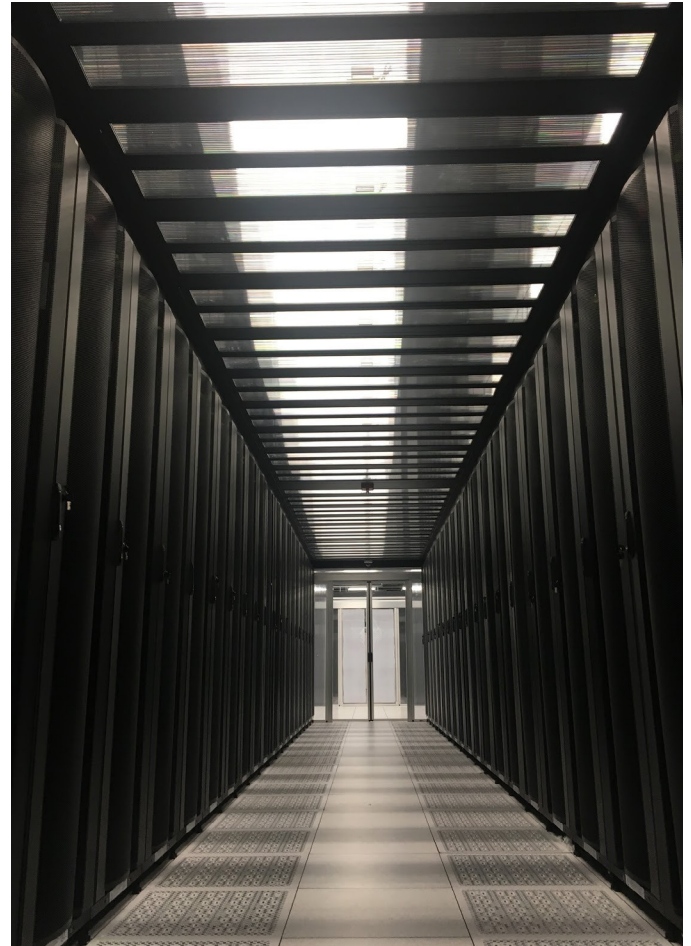


Figure 2: Containment Hallway

Containment - Freestanding System

The Enconnex Freestanding system is a containment frame. With this frame system, the IT cabinets can be quickly rolled into the aisle. Supports both HAC and CAC builds.

PRODUCT APPLICATIONS

- Preventing Hot Air and Cold Air Mixing
- Data Centers
- High-Density Applications
- Energy Rebate Programs

PRODUCT FEATURES

- Flexible length, width, and height.
- Supports roof and duct products
- Supports HAC and CAC
- Sufficient accessories to fulfill different application scenarios



Figure 3: Free Standing Frame



Figure 4: Freestanding Frame

FRAME PHYSICAL ATTRIBUTES

PHYSICAL	SPECS
Physical Dimensions - Width (After assembly)	Compatible with 4', 5', and 6' aisles as well as 1.2 m, 1.5 m, and 1.8 m aisles. Width is adjustable on-site.
Physical Dimensions - Height (After assembly)	Compatible with 2 m to 2.3 m tall cabinets. Height is adjustable on-site.
Physical Dimensions - Length (After assembly)	Length can range from 1.8 m to 9 m with a 0.6 m adjustable step. Length is flexible and can be configured.
Material	Steel tube
Color	Black RAL 9005

COMPONENT ATTRIBUTES

SKU#	DESCRIPTION	FUNCTION
ECX-CTMT-UEFRM	Universal Containment End Frame 1 Pair	End Frame, Adjust the aisle width and height
ECX-CTMT-LBM-2400	Universal Containment Length Beam 2400 mm 2 pcs/set	Length beam, configure the aisle length
ECX-CTMT-LBM-1800	Universal Containment Length Beam 1800 mm 2 pcs/set	
ECX-CTMT-LBM-1200	Universal Containment Length Beam 1200 mm 2 pcs/set	
ECX-CTMT-LBM-600	Universal Containment Length Beam 600 mm 2 pcs/set	
ECX-CTMT-SBM	Universal Containment Short Beam 1200-1800 mm 1 pcs/ set	Horizontal support beam, keep the frame stable
ECX-CTMT-TPS	Universal Containment Temporary Posts 2 pcs/set	Support the length beam once longer than 3.6 m
ECX-CTMT-LBM-INCNCT	Universal Containment Length Beam Connector 2pcs/set	Connect the length beams
ECX-CTMT-SB-600	Universal Containment Support Panel 600 mm 1 pcs	Seal the gap between cabinet and length beam

* Based on the different configurations of the above components, the free-standing systems will vary in size.



Figure 5: Cabinet in Frame

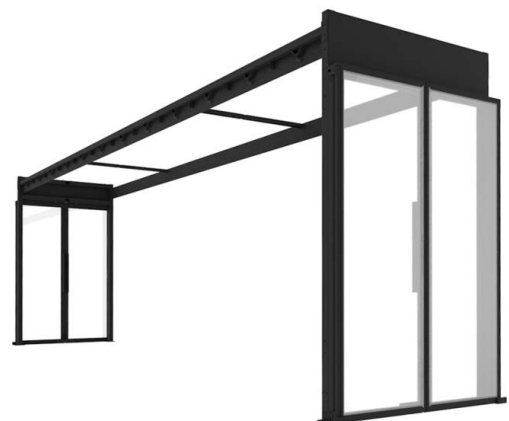


Figure 6: Frame with Doors

Containment Accessories - Dual Sliding Doors

SKU#: ECX-CTMT-12DS-2180C, ECX-CTMT-18DS-2180C, ECX-CTMT-12DS-2180T10, ECX-CTMT-18DS-2180T10

Enconnex Dual Sliding Doors are the ideal solution for both cold and hot aisle containment designs. Combining cost-effectiveness with ease of installation, the no threshold design eliminates tripping hazards and complements data center designs. The Enconnex Containment Dual Sliding Door with auto close feature is available for 4 and 6 feet aisles and different height options.

PRODUCT APPLICATIONS

- Data Centers
- High-Density Applications
- Energy Rebate Programs

PRODUCT FEATURES

- Pre-assembled dual sliding door, fast installation
- No threshold design prevents tripping
- Perimeter compression gaskets efficiently seal and minimize air leakage
- Auto hold when doors fully open and auto close when doors are not fully open

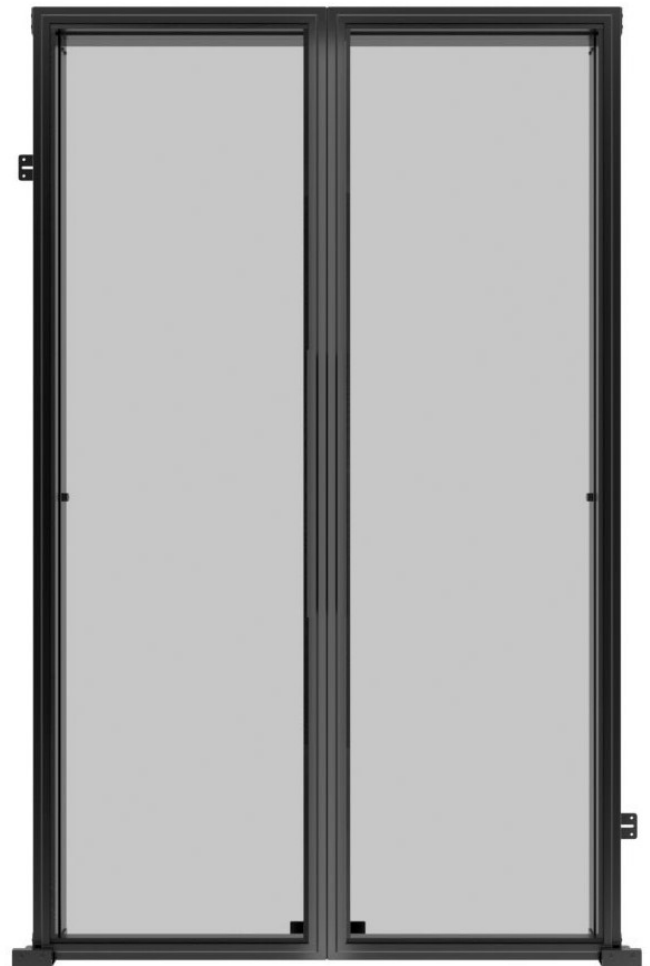


Figure 7: Dual Sliding Doors

PHYSICAL SPECIFICATIONS

PHYSICAL	ECX-CTMT-12DS-2180C	ECX-CTMT-18DS-2180C	ECX-CTMT-12DS-2180T10	ECX-CTMT-18DS-2180T10
Dimensions*	85.8" x 59.1" x 5" (2180 x 1502 x 127 mm)	85.8" x 83" x 5" (2180 x 2109 x 127 mm)	85.8" x 59.1" x 5.15" (2180 x 1502 x 131 mm)	85.8" x 83" x 5.15" (2180 x 2109 x 131 mm)
Net Weight	187.4 lbs (85 kg)	253.5 lbs (115 kg)	187.4 lbs (85 kg)	253.5 lbs (115 kg)
Shipping Dimensions	90.6" x 61.3" x 16.9" (2300 x 1555 x 430 mm)	90.6" x 85.1" x 19.7" (2300 x 2162 x 500 mm)	90.6" x 61.3" x 16.9" (2300 x 1555 x 430 mm)	90.6" x 85.1" x 19.7" (2300 x 2162 x 500 mm)
Shipping Weight	551.1 lbs (250 kg)	683.4 lbs (310 kg)	551.1 lbs (250 kg)	683.4 lbs (310 kg)
Cabinet Size	42/45/48/52U	42/45/48/52U	42/45/48/52U	42/45/48/52U
Aisle Width	1200 mm, 4 ft	1800 mm, 6 ft	1200 mm, 4 ft	1800 mm, 6 ft
Color*	Black	Black	Black	Black
Cycle Times	10000	10000	10000	10000
Moving Style	Semi-Auto close, Open hold	Semi-Auto close, Open hold	Semi-Auto close, Open hold	Semi-Auto close, Open hold
Shipping	2 pcs. per pallet	2 pcs. per pallet	2 pcs. per pallet	2 pcs. per pallet

*Height and color can be customized.

Containment Accessories - Tilt Window System

SKU#: ECX-612-SPLIT-TLT-CLG-001, ECX-612-SGL-TLT-CLG-001,
ECX-618-SPLIT-TLT-CLG-001, ECX-618-SGL-TLT-CLG-001

The Enconnex containment Tilt Window System is a durable solution for cold aisle and hot aisle containment. It will separate cold and hot air for more efficient cooling and, in the event of a fire, it will provide unobstructed sprinkler coverage by automatically tilting all of the ceiling windows open. Single and Split Tilt Windows available

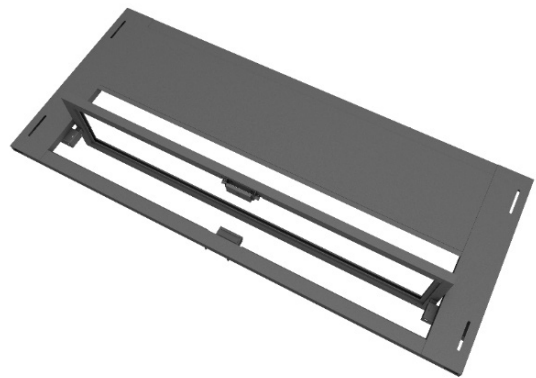


Figure 8: Single Tilt Window

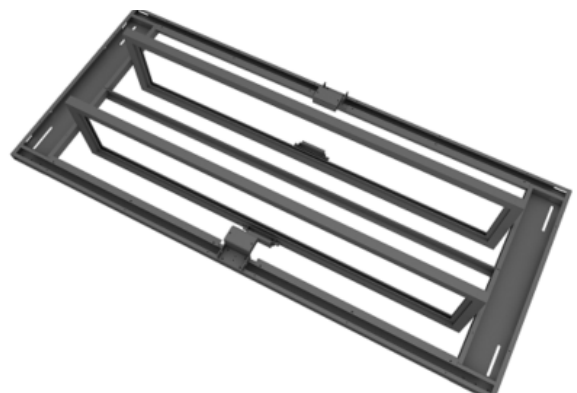


Figure 9: Split Tilt Window

PRODUCT APPLICATIONS

- Data Centers
- Lab Environments
- High-Density Applications
- Energy Rebate Programs

PRODUCT FEATURES

- Electromagnetic lock controls tilt window position
- Reusable solution
- Split tilt window design reduces the clearance requirement on both sides
- Single tilt window design provides dedicated space for camera mounting
- Easily integrated with BMS

PHYSICAL SPECIFICATIONS

Physical	ECX-612-SPLIT-TLT-CLG-001	ECX-612-SGL-TLT-CLG-001	ECX-618-SPLIT-TLT-CLG-001	ECX-618-SGL-TLT-CLG-001
Dimensions	54" x 23.6" x 2.8" (1372.8 x 599 x 72.3 mm)	54" x 23.6" x 2.8" (1372.8 x 599 x 72.3 mm)	78" x 23.6" x 2.8" (1981.8 x 599 x 72.3 mm)	78" x 23.6" x 2.8" (1981.8 x 599 x 72.3 mm)
Net Weight	33.1 lbs (15 kg)	46.3 lbs (21 kg)	35.9 lbs (16.3 kg)	53.9 lbs (24.5 kg)
Shipping Dimensions	55.1" x 25.6" x 36" (1400 x 650 x 923 mm)	55.1" x 25.6" x 36" (1400 x 650 x 923 mm)	86.6" x 25.6" x 36" (2200 x 650 x 923 mm)	86.6" x 25.6" x 36" (2200 x 650 x 923 mm)
Shipping Weight	529 lbs (240 kg)	663 lbs (301 kg)	578 lbs (262 kg)	739 lbs (336 kg)
Aisle Width	1200 mm, 4 ft	1200 mm, 4 ft	1800 mm, 6 ft	1800 mm, 6 ft
Color	Black	Black	Black	Black
Shipping	10 pcs. per pallet	10 pcs. per pallet	10 pcs. per pallet	10 pcs. per pallet

Containment Accessories - Support Panels

SKU#: ECX-625-CBT-SUP, ECX-825-CBT-SUP, ECX-61.3-CBT-SUP-PNL-001, ECX-81.3-CBT-SUP-PNL-001

The Enconnex Containment Support Panels for the tilt window system add clearance between the tilt window and the cabinet. These support panels raise the tilt window above the cabinet allowing the windows to open in the event of a fire.

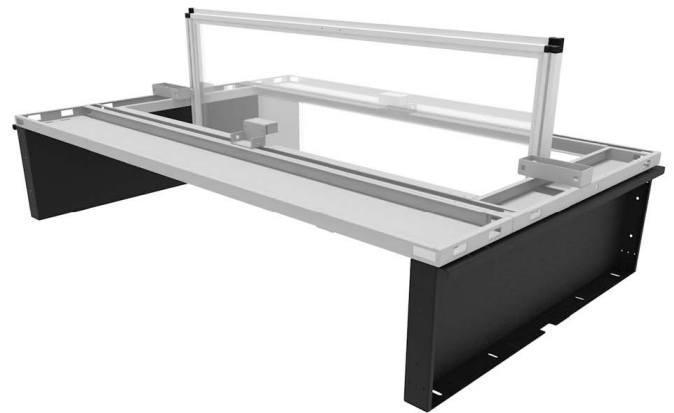


Figure 10: Tilt Window System with Support Panels

PRODUCT APPLICATIONS

- Data Centers
- Lab Environments
- High-Density Applications
- Energy Rebate Programs

PRODUCT FEATURES

- Support panel for tilt window system
- Raise the tilt window upward 2U to avoid hitting the cabinet door or the top of the cabinet
- Compatible with ECX and DC cabinet
- Can customize for compatibility with customer's existing cabinet
- White color optional
- Available for 600 mm and 800 mm cabinets

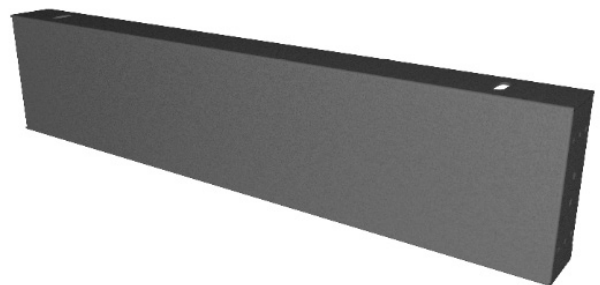


Figure 11: Support Panel

PHYSICAL SPECIFICATIONS

Physical	ECX-625-CBT-SUP	ECX-825-CBT-SUP	ECX-61.3-CBT-SUP-PNL-001	ECX-81.3-CBT-SUP-PNL-001
Dimensions	23.6" x 9.84" x 2.8" (600 x 250 x 72 mm)	31.5" x 9.84" x 2.8" (800 x 250 x 72 mm)	23.6" x 5.12" x 2.8" (600 x 130 x 72 mm)	31.5" x 5.12" x 2.8" (800 x 130 x 72 mm)
Net Weight	10lbs (3.95 kg)	11 .55lbs (5.25 kg)	4.62 lbs (2.1 kg)	6.03 lbs (2.74 kg)
Shipping Dimensions	28.7" x 24.8" x 20.5" (730 x 630 x 520 mm)	28.7" x 32.7" x 20.5" (730 x 830 x 520 mm)	28.7" x 24.8" x 11.8" (730 x 630 x 300 mm)	28.7" x 24.8" x 11.8" (730 x 830 x 300 mm)
Shipping Weight	176 lbs (80 kg)	233 lbs (106 kg)	92.4 lbs (42 kg)	121 lbs (55 kg)
Aisle Width	1200 mm, 4 ft	1200 mm, 4	1800 mm, 6	1800 mm, 6
Color	Black	Black	Black	Black
Shipping	20 pcs. per carton	20 pcs. per carton	20 pcs. per carton	20 pcs. per carton

Containment Accessories - Fixed Panel

SKU#: ECX-212-FXD-CLG-001, ECX-218-FXD-CLG-001

The Enconnex Fixed Panel is used with the tilt window covering the 200 mm gap and it can also be used as a mounting chassis for sensors and CCTV.



Figure 12: Fixed Panel

PRODUCT APPLICATIONS

- Data Centers
- High-Density Applications
- Energy Rebate Programs

PRODUCT FEATURES

- Fixed Panel to cover the 200 mm gap
- Can mount the CCTV or sensor on it
- Black by default, white color option

PHYSICAL SPECIFICATIONS

PHYSICAL	CX-CTMT-12DS-2180C	ECX-CTMT-18DS-2180C
Dimensions	54" x 7.87" x 1.06" (1372.8 x 200 x 27 mm)	78" x 7.87" x 21.06" (1981.8 x 200 x 27 mm)
Net Weight	9.9 lbs (4.5 kg)	14.85 lbs (6.75 kg)
Shipping Dimensions	55.1" x 9.1" x 11.8" (1400 x 230 x 300 mm)	78.25" x 9.1" x 11.8" (2000 x 230 x 300 mm)
Shipping Weight	100.2 lbs (45 kg)	151.4 lbs (66 kg)
Aisle Width	1200 mm, 4	1800 mm, 6 ft
Color	Black	Black
Shipping	10 pcs. per pallet	10 pcs. per pallet

Containment Accessories - Drop Away Panel

SKU#: ECX-DP-061260-F, ECX-DP-061380-F, ECX-DP-061870-F, ECX-DP-061990-F

The Enconnex containment drop away system is a quick and low cost solution for cold aisle containment. It will separate cold and hot air for more efficient cooling and, in the event of a fire, the ceiling panels will shrink and drop away providing unobstructed sprinkler coverage.

PRODUCT APPLICATIONS

- Data Centers
- High-Density Applications
- Energy Rebate Programs

PRODUCT FEATURES

- Low cost and quick installation
- Can cut on site to fit with variable site situation.
- Fire rating Class A Vinyl
- Meets National Fire Protection Association (NFPA 13) standards
- No need to integrate with BMS
- L shape frame overlap for sealing

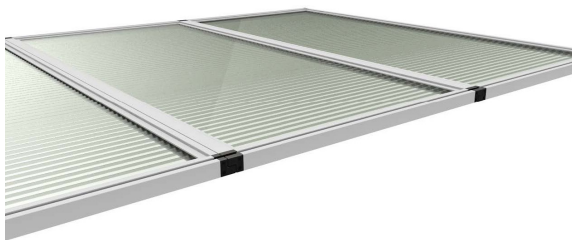


Figure 13: Drop Away Panel



Figure 14: Drop Away Panel

PHYSICAL SPECIFICATIONS

PHYSICAL	ECX-DP-061260-F	ECX-DP-061380-F	ECX-DP-061870-F	ECX-DP-061990-F
Dimensions*	49.6" x 23.6" x 1.0" (1260 x 600 x 25 mm)	54" x 23.6" x 1.0" (1380 x 600 x 25 mm)	73.6" x 23.6" x 1.0" (1870 x 600 x 25 mm)	78.3" x 23.6" x 1.0" (1990 x 600 x 25 mm)
Net Weight	12 lbs (5.5 kg)	14 lbs (6.4 kg)	18 lbs (8.2 kg)	20 lbs (9.1 kg)
Shipping Dimensions	50.7" x 24.7" x 10.4" (1288 x 628 x 264 mm)	55.1" x 24.7" x 10.4" (1401 x 628 x 264 mm)	74.7" x 24.7" x 10.4" (1895 x 628 x 264 mm)	79.4" x 24.7" x 10.4" (2015 x 628 x 264 mm)
Shipping Weight	125 lbs (56.8 kg)	145 lbs (66 kg)	185 lbs (84 kg)	210 lbs (95 kg)
Aisle Width	1200 mm, 4 ft, DC cabinet	1200 mm, 4 ft, SSG cabinet	1800 mm, 6 ft, DC cabinet	1800 mm, 6 ft, SSG cabinet
Color*	Clear frame, frosted panel	Clear frame, frosted panel	Clear frame, frosted panel	Clear frame, frosted panel
Shipping	10 pcs. per pallet	10 pcs. per pallet	10 pcs. per pallet	10 pcs. per pallet
Fire Rating	Class A & Flame V0	Class A & Flame V0	Class A & Flame V0	Class A & Flame V0
Toolless Mounting	Velcro	Velcro	Velcro	Velcro

* Can customize accordingly, please contact Enconnex Engineering

Containment Accessories - Infill Panel

SKU#: ECX-CTMT-IFP-H062386, ECX-CTMT-IFP-H062209, ECX-CTMT-IFP-H082386, ECX-CTMT-IFP-H082209

The Enconnex Containment Infill Panels are key accessories. They help cover the gaps between the cabinets and the gaps between the cabinets and the pillars to ensure the containment is fully sealed.

PRODUCT APPLICATIONS

- Preventing Hot and Cold Air Mixing
- Data Centers
- High-Density Applications
- Energy Rebate Programs
- Cover Gaps

PRODUCT FEATURES

- Low cost and quick installation
- Can cut on site to fit with variable site situation
- Twin-wall PC panel
- E84 Class A rating
- No need to integrate with BMS
- L-shape frame overlaps for sealing



Figure 15: In fill Panel

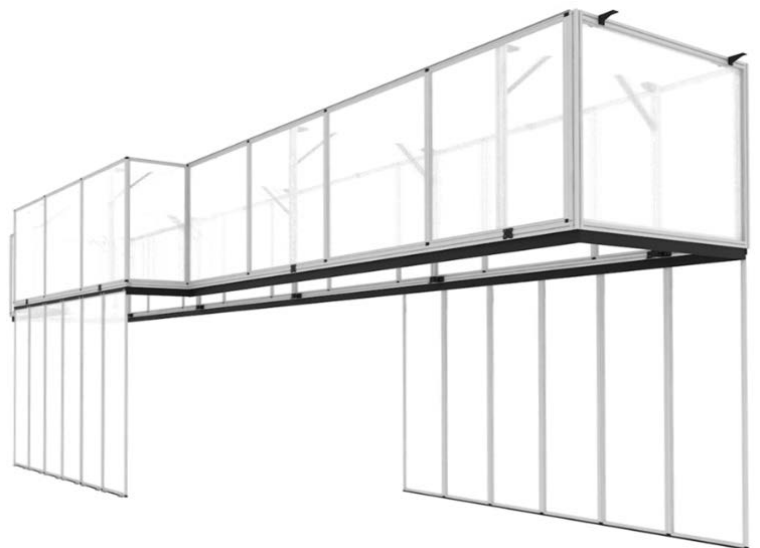


Figure 16: In fill Panel assembled

PHYSICAL SPECIFICATIONS

PHYSICAL	ECX-CT-MT-IFP-H062386	ECX-CT-MT-IFP-H062209	ECX-CT-MT-IFP-H082386	ECX-CT-MT-IFP-H082209
Dimensions	23.6" x 1" x 93.9" (600 x 25 x 2386 mm)	23.6" x 1" x 86.7" (600 x 25 x 2209 mm)	31.5" x 1" x 93.9" (800 x 25 x 2386 mm)	31.5" x 1" x 86.7" (800 x 25 x 2209 mm)
Net Weight	25 lbs (11.3 kg)	22 lbs (10 kg)	28 lbs (12.7 kg)	25 lbs (11.36 kg)
Shipping Dimensions	94.5" x 24.7" x 15.5" (2401 x 628 x 394 mm)	87.6" x 24.7" x 15.5" (2225 x 628 x 394 mm)	94.5" x 32.6" x 15.5" (2401 x 828 x 394 mm)	87.6" x 32.6" x 15.5" (2225 x 828 x 394 mm)
Shipping Weight	350 lbs (159 kg)	320 lbs (145 kg)	380 lbs (173 kg)	350 lbs (159 kg)
Color*	Clear frame, frosted panel	Clear frame, frosted panel	Clear Frame, Frosted panel	Clear Frame, Frosted panel
Shipping	10 pcs. per pallet	10 pcs. per pallet	10 pcs. per pallet	10 pcs. per pallet
Fire Rating	UL94 & E84	UL94 & E84	UL94 & E84	UL94 & E84
Toolless Mounting	Toolless mounted panel	Toolless mounted panel	Toolless mounted panel	Toolless mounted panel

* Can customize accordingly, please contact Enconnex Engineering

*This Infill Panel needs to be combined with the Enconnex Containment Frame system, if no containment frame, please contact Enconnex Engineering for other solutions.

