

LC Duplex Singlemode Adapter

SKU#: ECX-ADP-LC-DX-BL

The Enconnex fiber optic mating sleeve adapters allow users to interconnect and precisely align two connectors of the same type. The singlemode blue adapters are manufactured with ceramic zirconia sleeves and exceed performance with repeatable results.

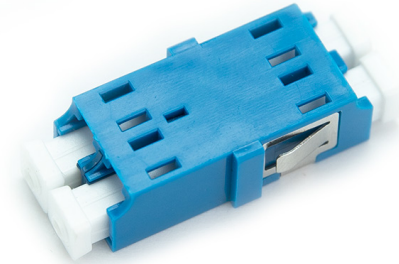


Figure 1: LC Duplex Singlemode Adapter

PRODUCT FEATURES

- Low insertion loss
- Ceramic Zirconia sleeves
- High repeatability
- Color options available
- Superior weld strength
- RoHS Compliant

PHYSICAL SPECIFICATIONS

PHYSICAL	SPECIFICATIONS
Fiber Type	Singlemode
Insertion Loss	$\leq 0.25\text{dB}$
Return Loss	$\geq 0.55\text{dB}$
Durability	$< -0.1\text{dB}$
Operating Temperature	$-40^{\circ}\text{C} \sim 100^{\circ}\text{C}$