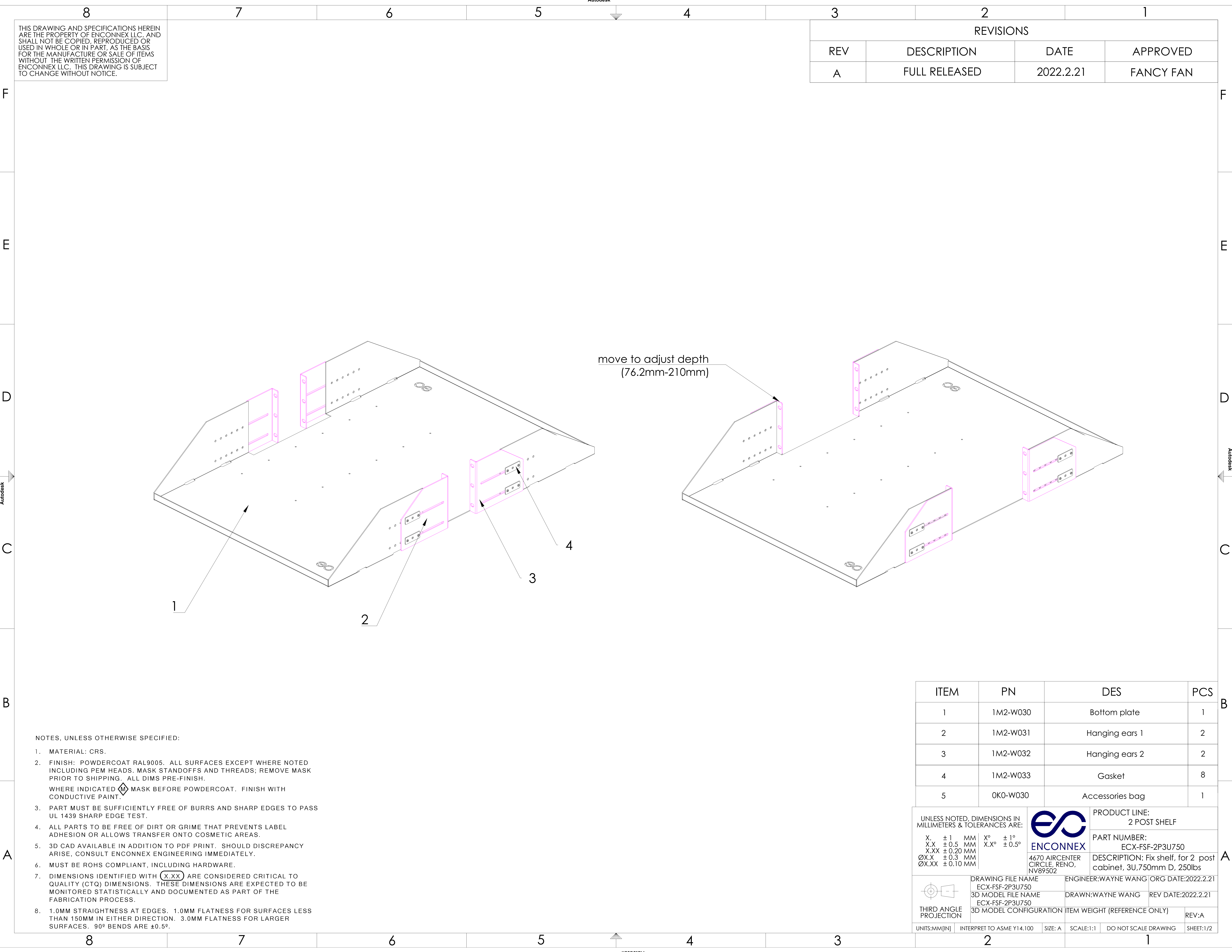


THIS DRAWING AND SPECIFICATIONS HEREIN ARE THE PROPERTY OF ENCONNEX LLC, AND SHALL NOT BE COPIED, REPRODUCED OR USED IN WHOLE OR IN PART, AS THE BASIS FOR THE MANUFACTURE OR SALE OF ITEMS WITHOUT THE WRITTEN PERMISSION OF ENCONNEX LLC. THIS DRAWING IS SUBJECT TO CHANGE WITHOUT NOTICE.

REVISIONS			
REV	DESCRIPTION	DATE	APPROVED
A	FULL RELEASED	2022.2.21	FANCY FAN



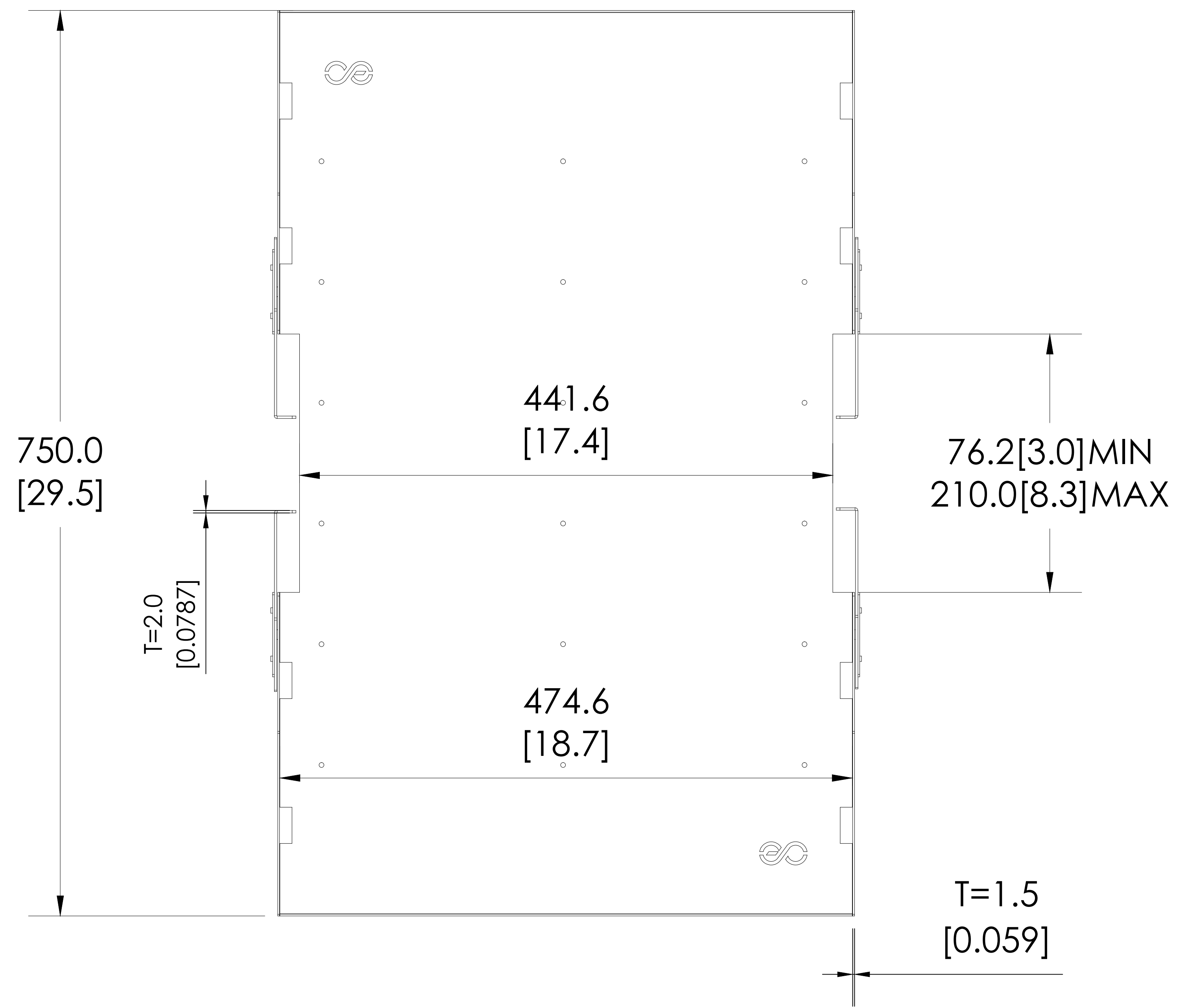
NOTES, UNLESS OTHERWISE SPECIFIED:

- MATERIAL: CRS.
- FINISH: POWDERCOAT RAL9005. ALL SURFACES EXCEPT WHERE NOTED INCLUDING PEM HEADS, MASK STANDOFFS AND THREADS; REMOVE MASK PRIOR TO SHIPPING. ALL DIMS PRE-FINISH.
WHERE INDICATED MASK BEFORE POWDERCOAT. FINISH WITH CONDUCTIVE PAINT.
- PART MUST BE SUFFICIENTLY FREE OF BURRS AND SHARP EDGES TO PASS UL 1439 SHARP EDGE TEST.
- ALL PARTS TO BE FREE OF DIRT OR GRIME THAT PREVENTS LABEL ADHESION OR ALLOWS TRANSFER ONTO COSMETIC AREAS.
- 3D CAD AVAILABLE IN ADDITION TO PDF PRINT. SHOULD DISCREPANCY ARISE, CONSULT ENCONNEX ENGINEERING IMMEDIATELY.
- MUST BE ROHS COMPLIANT, INCLUDING HARDWARE.
- DIMENSIONS IDENTIFIED WITH (X.XX) ARE CONSIDERED CRITICAL TO QUALITY (CTQ) DIMENSIONS. THESE DIMENSIONS ARE EXPECTED TO BE MONITORED STATISTICALLY AND DOCUMENTED AS PART OF THE FABRICATION PROCESS.
- 1.0MM STRAIGHTNESS AT EDGES. 1.0MM FLATNESS FOR SURFACES LESS THAN 150MM IN EITHER DIRECTION. 3.0MM FLATNESS FOR LARGER SURFACES. 90° BENDS ARE ±0.5°.

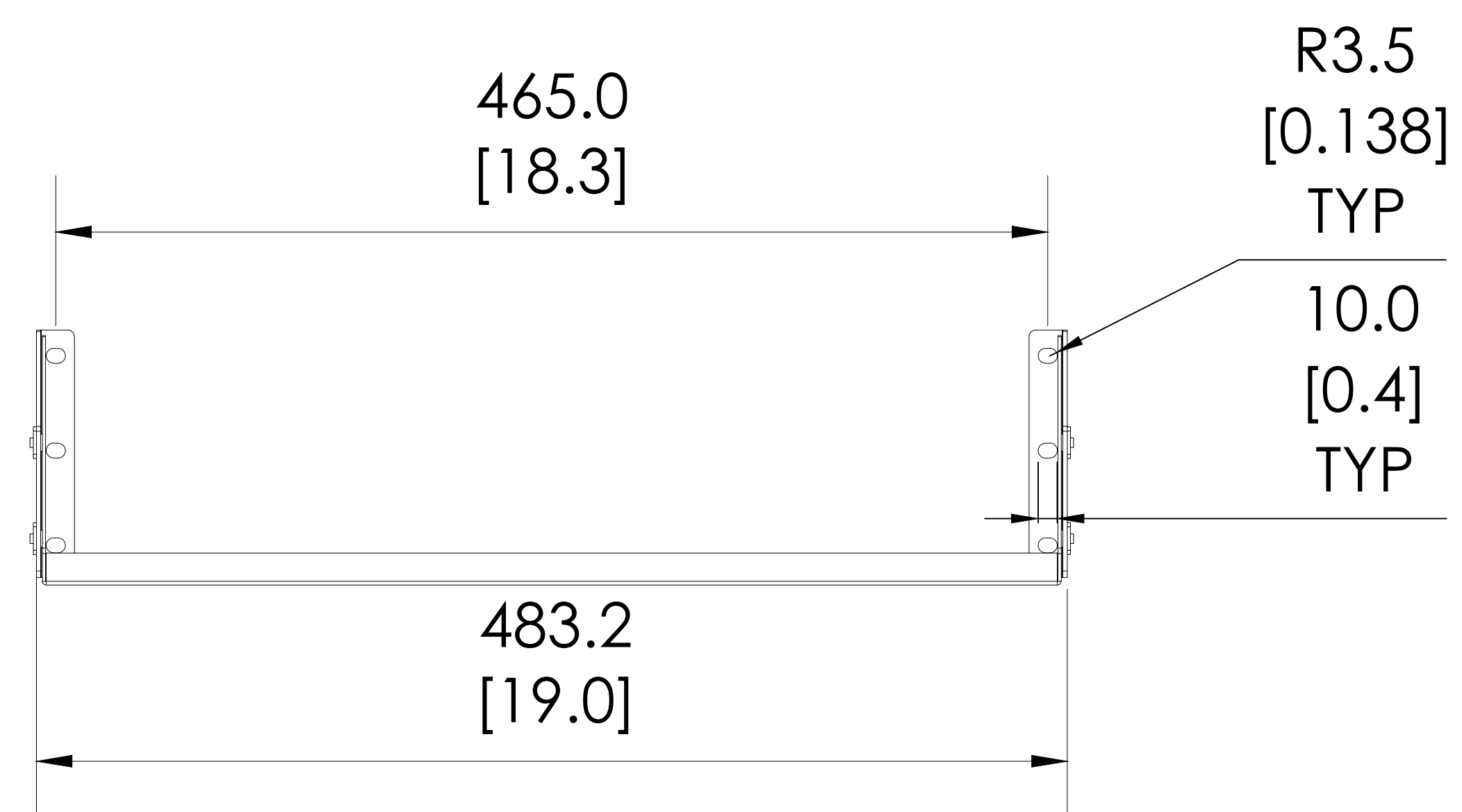
ITEM	PN	DES	PCS
1	1M2-W030	Bottom plate	1
2	1M2-W031	Hanging ears 1	2
3	1M2-W032	Hanging ears 2	2
4	1M2-W033	Gasket	8
5	OK0-W030	Accessories bag	1

UNLESS NOTED, DIMENSIONS IN MILLIMETERS & TOLERANCES ARE: X. ±1 MM X° ±1° X.X ±0.5 MM X.X° ±0.5° X.XX ±0.20 MM ØX.X ±0.3 MM ØX.XX ±0.10 MM		PRODUCT LINE: 2 POST SHELF
		PART NUMBER: ECX-FSF-2P3U750
4670 AIRCENTER CIRCLE, RENO, NV89502		DESCRIPTION: Fix shelf, for 2 post cabinet, 3U,750mm D, 250lbs
	DRAWING FILE NAME ECX-FSF-2P3U750	ENGINEER:WAYNE WANG ORG DATE:2022.2.21
	3D MODEL FILE NAME ECX-FSF-2P3U750	DRAWN:WAYNE WANG REV DATE:2022.2.21
THIRD ANGLE PROJECTION	3D MODEL CONFIGURATION	ITEM WEIGHT (REFERENCE ONLY)
UNITS:MM[IN]	INTERPRET TO ASME Y14.100	SIZE: A
SCALE:1:1	DO NOT SCALE DRAWING	SHEET:1/2

THIS DRAWING AND SPECIFICATIONS HEREIN ARE THE PROPERTY OF ENCONNEX LLC, AND SHALL NOT BE COPIED, REPRODUCED OR USED IN WHOLE OR IN PART, AS THE BASIS FOR THE MANUFACTURE OR SALE OF ITEMS WITHOUT THE WRITTEN PERMISSION OF ENCONNEX LLC. THIS DRAWING IS SUBJECT TO CHANGE WITHOUT NOTICE.

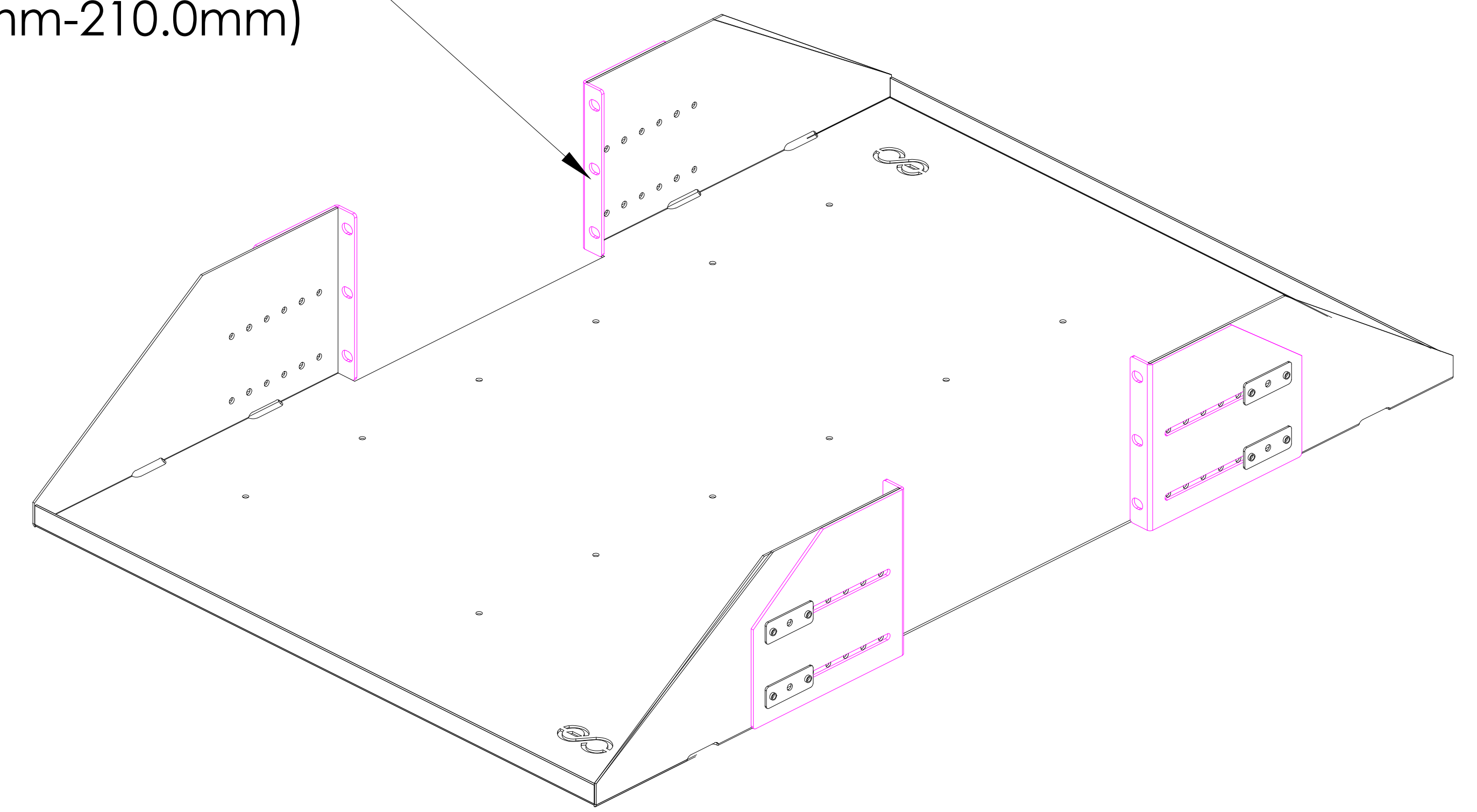


TOP VIEW

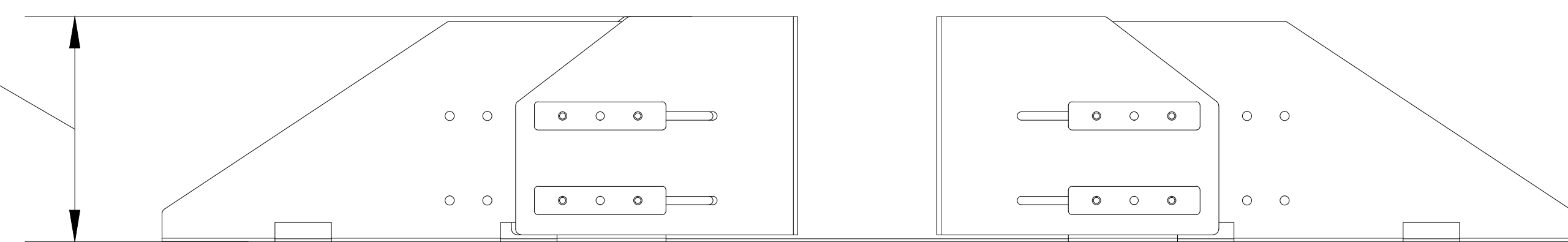


FRONT VIEW


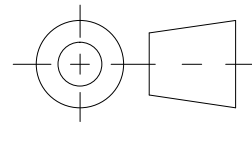
move to adjust depth
(76.2mm-210.0mm)



119.6
[4.7]



SIDE VIEW

UNLESS NOTED, DIMENSIONS IN MILLIMETERS & TOLERANCES ARE:		 ENCONNEX 4670 AIRCENTER CIRCLE, RENO, NV89502	PRODUCT LINE: 2 POST SHELF
X. ± 1 MM	X° ± 1°		PART NUMBER: ECX-FSF-2P3U750
X.X ± 0.5 MM	X.X° ± 0.5°	DESCRIPTION: Fix shelf, for 2 post cabinet, 3U,750mm D, 250lbs	
X.XX ± 0.20 MM			
∅X.X ± 0.3 MM		DRAWING FILE NAME ECX-FSF-2P3U750	ENGINEER:WAYNE WANG ORG DATE:2022.2.21
∅X.XX ± 0.10 MM		3D MODEL FILE NAME ECX-FSF-2P3U750	DRAWN:WAYNE WANG REV DATE:2022.2.21
 THIRD ANGLE PROJECTION		3D MODEL CONFIGURATION	ITEM WEIGHT (REFERENCE ONLY)
	UNITS:MM[IN]	INTERPRET TO ASME Y14.100	SIZE: A
			REV:A
			SHEET:2/2