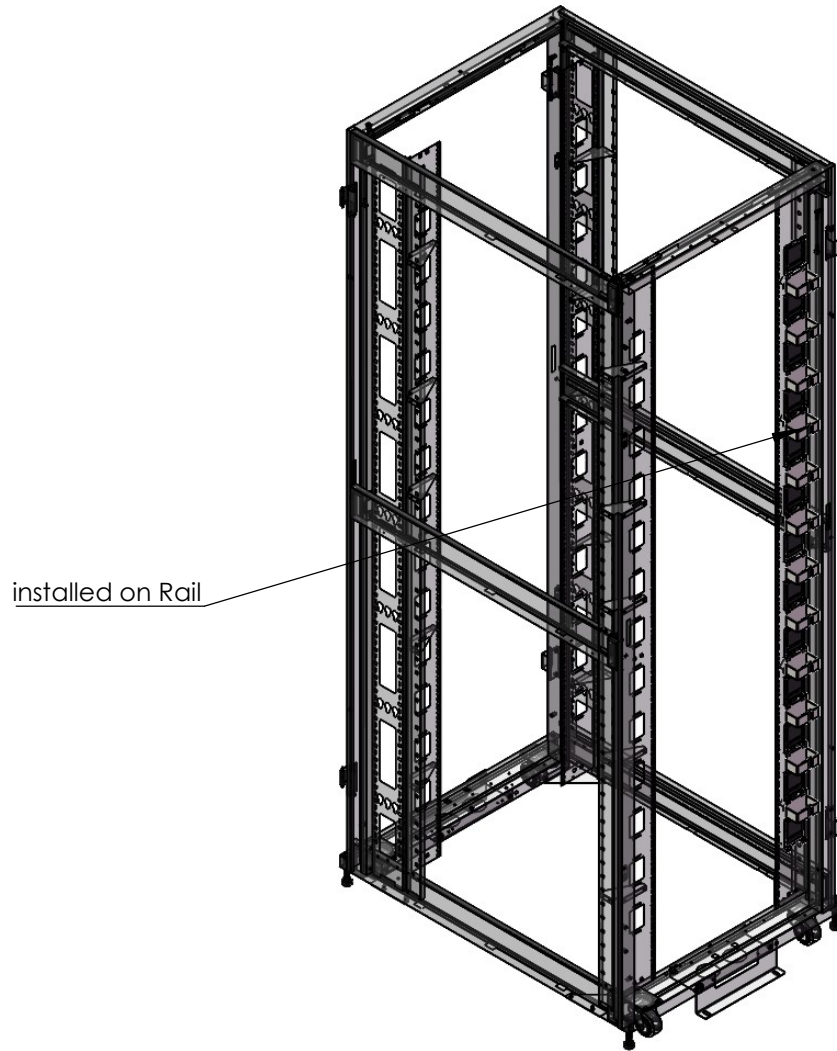
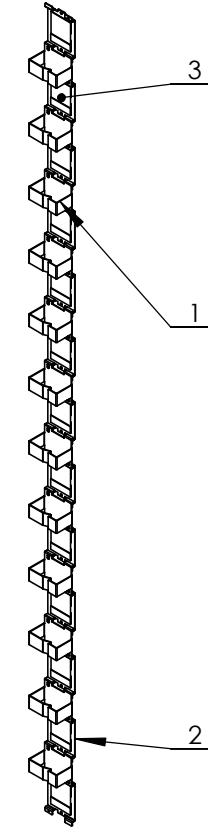


THIS DRAWING AND SPECIFICATIONS HEREIN ARE THE PROPERTY OF ENCONNEX LLC. AND SHALL NOT BE COPIED, REPRODUCED OR USED IN WHOLE OR IN PART, AS THE BASIS FOR THE MANUFACTURE OR SALE OF ITEMS WITHOUT THE WRITTEN PERMISSION OF ENCONNEX LLC. THIS DRAWING IS SUBJECT TO CHANGE WITHOUT NOTICE.

REVISIONS				
REV.	SUFFIX	DESCRIPTION	DATE	APPROVED
A		FULL Released	2022/2/17	FANCY FAN




Application view

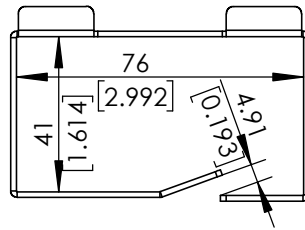


Front view

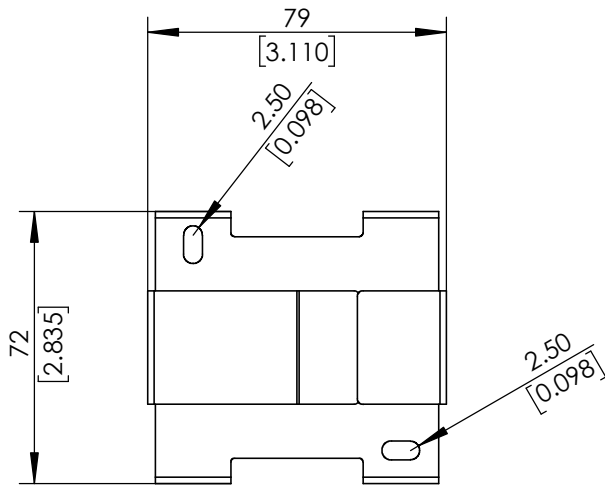
ITEM NO.	PART NUMBER	DESCRIPTION	QTY.
1	1M5-Y007	metal loop	12
2	1M5-Y006	cable manager base	13
3	2F3-Y003	brush	13

UNLESS NOTED, DIMENSIONS IN MILLIMETERS & TOLERANCES ARE:			PRODUCT LINE: Cable management	
X. ±1 MM	X° ±1°		PART NUMBER: ECX-CBLP-SLPX12	
X.X ±0.5 MM	X.X° ±0.5°	4670 AIRCENTER CIRCLE, RENO, NV89502	DESCRIPTION: Single Cable Loop 41mm X 76mm 12 pcs, used for ECX cabinet, mounting rail	
X.XX ±0.20 MM				
ØX.X ±0.3 MM		DRAWING FILE NAME ECX-CBLP-SLPX12		ENGINEER: Yifei Wang
ØX.XX ±0.10 MM		3D MODEL FILE NAME ECX-CBLP-SLPX12		ORG DATE: 2022/2/17
		3D MODEL CONFIGURATION		DRAWN: Yifei Wang
		THIRD ANGLE PROJECTION		REV DATE: 2022/2/17
		UNITS:MM[IN]		ITEM WEIGHT (REFERENCE ONLY)
		INTERPRET TO ASME Y14.100	SCALE:1:15	REV: A
		SIZE: B	DO NOT SCALE DRAWING	SHEET:1/4

THIS DRAWING AND SPECIFICATIONS HEREIN ARE THE PROPERTY OF ENCONNEX LLC. AND SHALL NOT BE COPIED, REPRODUCED OR USED IN WHOLE OR IN PART, AS THE BASIS FOR THE MANUFACTURE OR SALE OF ITEMS WITHOUT THE WRITTEN PERMISSION OF ENCONNEX LLC. THIS DRAWING IS SUBJECT TO CHANGE WITHOUT NOTICE.

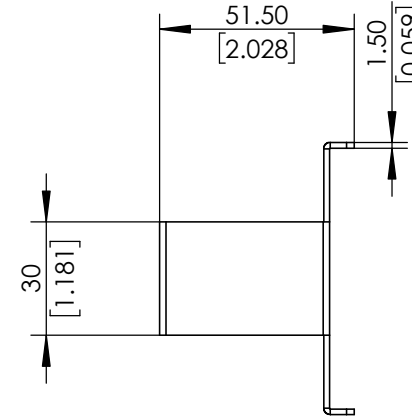
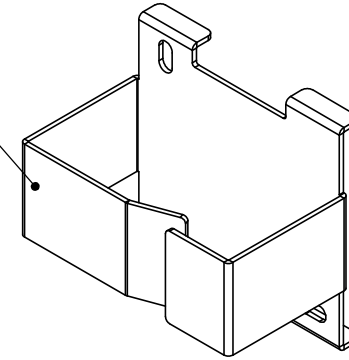


Top view



Front view


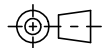
Holds 50 wires with a diameter of 6mm



Side view

NOTES, UNLESS OTHERWISE SPECIFIED:

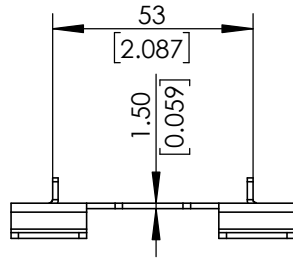
1. MATERIAL: CRS 1.5MM.
2. FINISH: POWDERCOAT RAL9005. ALL SURFACES EXCEPT WHERE NOTED INCLUDING PEM HEADS. MASK STANDOFFS AND THREADS; REMOVE MASK PRIOR TO SHIPPING. ALL DIMS PRE-FINISH. WHERE INDICATED M MASK BEFORE POWDERCOAT. FINISH WITH CONDUCTIVE PAINT.
3. PART MUST BE SUFFICIENTLY FREE OF BURRS AND SHARP EDGES TO PASS UL 1439 SHARP EDGE TEST.
4. ALL PARTS TO BE FREE OF DIRT OR GRIME THAT PREVENTS LABEL ADHESION OR ALLOWS TRANSFER ONTO COSMETIC AREAS.
5. 3D CAD AVAILABLE IN ADDITION TO PDF PRINT. SHOULD DISCREPANCY ARISE, CONSULT ENCONNEX ENGINEERING IMMEDIATELY.
6. MUST BE ROHS COMPLIANT, INCLUDING HARDWARE.
7. DIMENSIONS IDENTIFIED WITH X.XX ARE CONSIDERED CRITICAL TO QUALITY (CTQ) DIMENSIONS. THESE DIMENSIONS ARE EXPECTED TO BE MONITORED STATISTICALLY AND DOCUMENTED AS PART OF THE FABRICATION PROCESS.
8. 1.0MM STRAIGHTNESS AT EDGES. 1.0MM FLATNESS FOR SURFACES LESS THAN 150MM IN EITHER DIRECTION. 3.0MM FLATNESS FOR LARGER SURFACES. 90° BENDS ARE ±0.5°.

UNLESS NOTED, DIMENSIONS IN MILLIMETERS & TOLERANCES ARE: X. ±1 MM X° ±1° X.X ±0.5 MM X.X° ±0.5° X.XX ±0.20 MM ØX.X ±0.3 MM ØX.XX ±0.10 MM		 4670 AIRCENTER CIRCLE, RENO, NV89502	PRODUCT LINE: Cable management
 THIRD ANGLE PROJECTION			PART NUMBER: ECX-CBLP-SLPX12
DRAWING FILE NAME ECX-CBLP-SLPX12		ENGINEER: Yifei Wang	ORG DATE: 2022/2/17
3D MODEL FILE NAME ECX-CBLP-SLPX12		DRAWN: Yifei Wang	REV DATE: 2022/2/17
3D MODEL CONFIGURATION		ITEM WEIGHT (REFERENCE ONLY)	
UNITS:MM[IN]	INTERPRET TO ASME Y14.100	SIZE: B	SCALE:1:2
DO NOT SCALE DRAWING		SHEET:2/4	

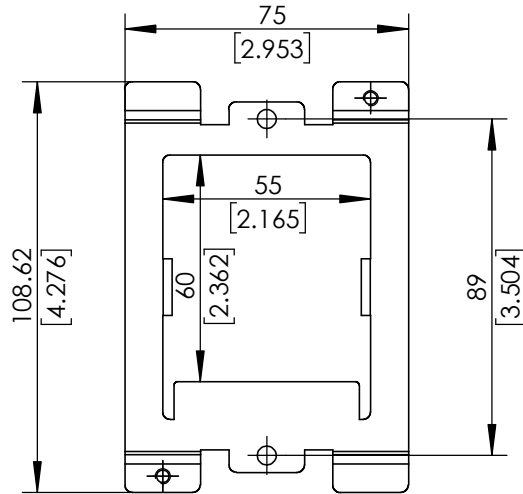
DESCRIPTION: Single Cable Loop 41mm X 76mm 12 pcs, used for ECX cabinet, mounting rail

REV: A

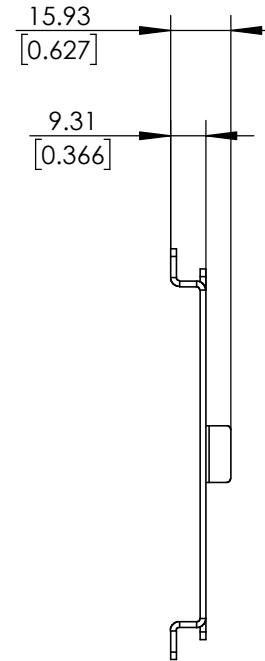
THIS DRAWING AND SPECIFICATIONS HEREIN ARE THE PROPERTY OF ENCONNEX LLC. AND SHALL NOT BE COPIED, REPRODUCED OR USED IN WHOLE OR IN PART, AS THE BASIS FOR THE MANUFACTURE OR SALE OF ITEMS WITHOUT THE WRITTEN PERMISSION OF ENCONNEX LLC. THIS DRAWING IS SUBJECT TO CHANGE WITHOUT NOTICE.



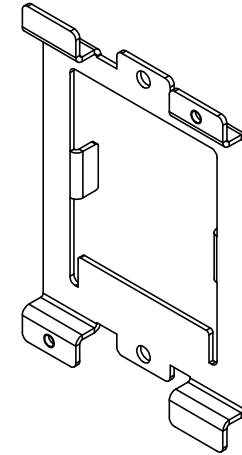
Top view



Front view



Side view

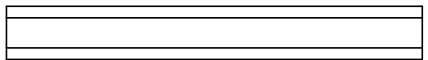


NOTES, UNLESS OTHERWISE SPECIFIED:

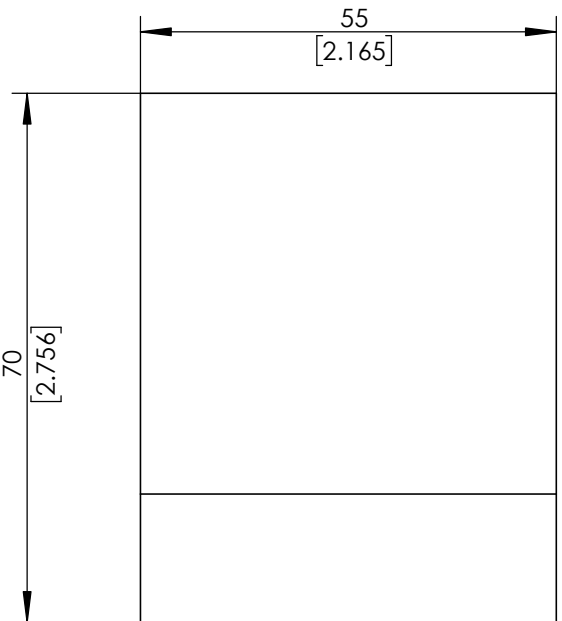
1. MATERIAL:CRS 1.5MM.
2. FINISH: POWDERCOAT RAL9005. ALL SURFACES EXCEPT WHERE NOTED INCLUDING PEM HEADS. MASK STANDOFFS AND THREADS; REMOVE MASK PRIOR TO SHIPPING. ALL DIMS PRE-FINISH. WHERE INDICATED M MASK BEFORE POWDERCOAT. FINISH WITH CONDUCTIVE PAINT.
3. PART MUST BE SUFFICIENTLY FREE OF BURRS AND SHARP EDGES TO PASS UL 1439 SHARP EDGE TEST.
4. ALL PARTS TO BE FREE OF DIRT OR GRIME THAT PREVENTS LABEL ADHESION OR ALLOWS TRANSFER ONTO COSMETIC AREAS.
5. 3D CAD AVAILABLE IN ADDITION TO PDF PRINT. SHOULD DISCREPANCY ARISE, CONSULT ENCONNEX ENGINEERING IMMEDIATELY.
6. MUST BE ROHS COMPLIANT, INCLUDING HARDWARE.
7. DIMENSIONS IDENTIFIED WITH X.XX ARE CONSIDERED CRITICAL TO QUALITY (CTQ) DIMENSIONS. THESE DIMENSIONS ARE EXPECTED TO BE MONITORED STATISTICALLY AND DOCUMENTED AS PART OF THE FABRICATION PROCESS.
8. 1.0MM STRAIGHTNESS AT EDGES. 1.0MM FLATNESS FOR SURFACES LESS THAN 150MM IN EITHER DIRECTION. 3.0MM FLATNESS FOR LARGER SURFACES. 90° BENDS ARE ±0.5°.

UNLESS NOTED, DIMENSIONS IN MILLIMETERS & TOLERANCES ARE:			PRODUCT LINE: Cable management		
X. ±1 MM	X° ±1°		PART NUMBER: ECX-CBLP-SLPX12		
X.X ±0.5 MM	X.X° ±0.5°	4670 AIRCENTER CIRCLE, RENO, NV89502	DESCRIPTION:Single Cable Loop 41mm X 76mm 12 pcs, used for ECX cabinet, mounting rail		
X.XX ±0.20 MM					
ØX.X ±0.3 MM			DRAWING FILE NAME ECX-CBLP-SLPX12	ENGINEER: Yifei Wang	ORG DATE: 2022/2/17
ØX.XX ±0.10 MM			3D MODEL FILE NAME ECX-CBLP-SLPX12	DRAWN: Yifei Wang	REV DATE: 2022/2/17
		3D MODEL CONFIGURATION	ITEM WEIGHT (REFERENCE ONLY)		REV: A
UNITS:MM[IN]	INTERPRET TO ASME Y14.100	SIZE: B	SCALE:1:2	DO NOT SCALE DRAWING	SHEET:3/4

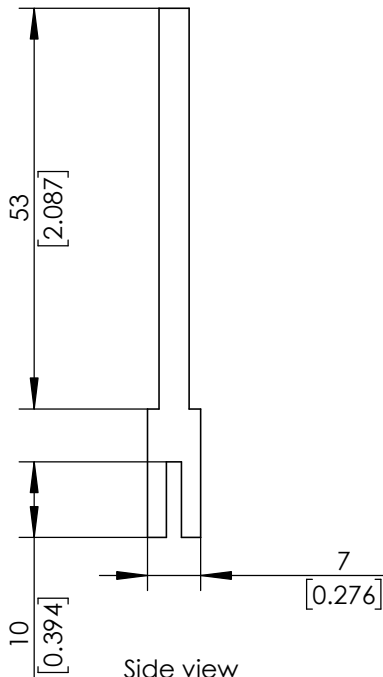
THIS DRAWING AND SPECIFICATIONS HEREIN ARE THE PROPERTY OF ENCONNEX LLC. AND SHALL NOT BE COPIED, REPRODUCED OR USED IN WHOLE OR IN PART, AS THE BASIS FOR THE MANUFACTURE OR SALE OF ITEMS WITHOUT THE WRITTEN PERMISSION OF ENCONNEX LLC. THIS DRAWING IS SUBJECT TO CHANGE WITHOUT NOTICE.



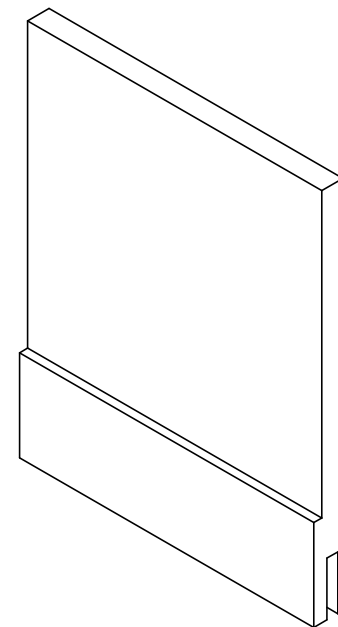
Top view


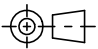


Front view



Side view



UNLESS NOTED, DIMENSIONS IN MILLIMETERS & TOLERANCES ARE:		 <b>ENCONNEX</b>	PRODUCT LINE: Cable management		
X. ± 1 MM	X° ± 1°		PART NUMBER: 2F3-Y003ECX-CBLP-SLPX12		
X.X ± 0.5 MM	X.X° ± 0.5°	4670 AIRCENTER CIRCLE, RENO, NV89502		DESCRIPTION: Single Cable Loop 41mm X 76mm 12 pcs, used for ECX cabinet, mounting rail	
X.XX ± 0.20 MM		 THIRD ANGLE PROJECTION	DRAWING FILE NAME ECX-CBLP-SLPX12	ENGINEER: Yifei Wang	ORG DATE: 2022/2/17
ØX.X ± 0.3 MM			3D MODEL FILE NAME ECX-CBLP-SLPX12	DRAWN: Yifei Wang	REV DATE: 2022/2/17
ØX.XX ± 0.10 MM		3D MODEL CONFIGURATION	ITEM WEIGHT (REFERENCE ONLY)		REV: E1A
UNITS:MM[IN]	INTERPRET TO ASME Y14.100	SIZE: B	SCALE:1:1	DO NOT SCALE DRAWING	SHEET:4/4