

# Sliding Shelf

SKU#: ECX-SSF-2P2U600

Enconnex cabinet accessories offer appropriate shelf options to meet different needs. Solutions range from light duty to heavy duty with various sizes and functions.

## PRODUCT APPLICATIONS

- 2-post series

## PRODUCT FEATURES

- Built from top quality materials
- Simple installation
- Light weight
- Compatible with a wide range of cabinet depths
- Long extension

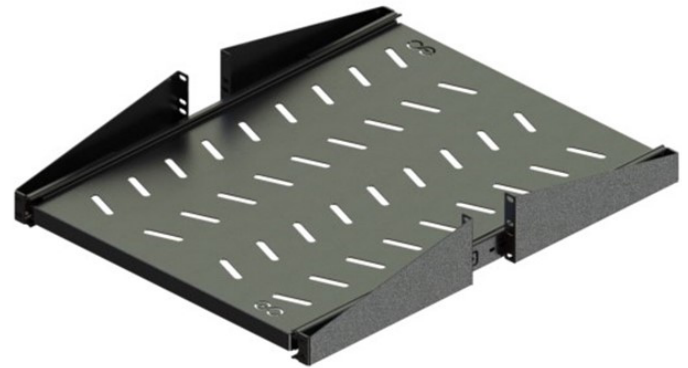


Figure 1 - Sliding Shelf - ECX-SSF-2P2U600

## PHYSICAL SPECIFICATIONS

Physical	Specs
Dimensions (DxWxH)	23.6" x 17.3" x 3.3" (600 x 440 x 85 mm)
Net Weight (lbs/kg)	14.52 lbs (6.6 kg)
Loading Capacity (lbs/kg)	150 lbs (60 kg)
Color	Black, RAL 9005
Material	CRS
Compatibility	Cabinet
Conformance	EIA310 Standard