

# 4-Post Fixed Shelf

SKU#: ECX-FSF-L750

Enconnex cabinet accessories offer appropriate shelving options to meet different needs. Fixed shelves enable the mounting of tower units, monitors, and other equipment into the rack environment. There are various loading capacities, sizes, mounting options, and multiple applications for customers to select.

## PRODUCT APPLICATIONS

- ECX and DC Series cabinets
- Commodity cabinet

## PRODUCT FEATURES

- Built from top quality materials
- Designed for 4-Post rack and cabinets
- Mountable at widths of 600mm to 800mm
- Cold rolled steel with black finish
- Shelf supports up to 200 lbs (90 kg) loading capacity

## PHYSICAL SPECIFICATIONS

Physical	Specs
Dimensions (DxWxH)	29.5" x 17.3" x 1.75" (750 x 440 x 44.45 mm)
Net Weight (lbs/kg)	11.22 lbs (5.1 kg)
Loading Capacity (lbs/kg)	200 lbs (90 kg)
Color	Black, RAL 9005
Material	CRS
Compatibility	19" IT Rack
Shelf Type	4-Post Fixed Shelf
Conformance	EIA310

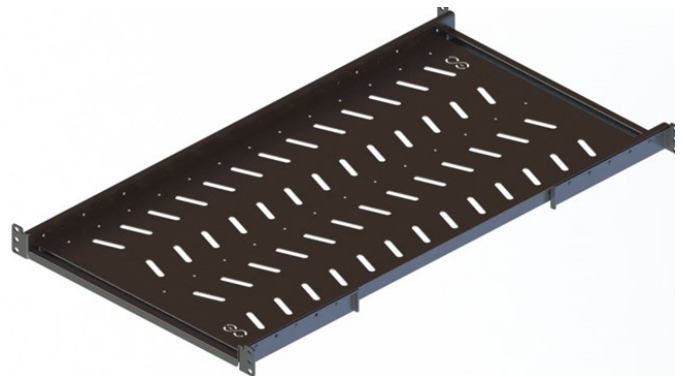


Figure 1 - 4-Post Fixed Shelf - ECX-FSF-L750