

2-Post Fixed Shelf

SKU#: ECX-FSF-2P3U750

Enconnex cabinet accessories offer appropriate shelving options to meet different needs. Fixed shelves enable the mounting of tower units, monitors, and other equipment into the rack environment. There are various loading capacities, sizes, mounting options, and multiple applications for customers to select.

PRODUCT APPLICATIONS

- 19" 2-post rack

PRODUCT FEATURES

- Built from top quality materials
- 2-post rack compatible
- Options with flanges facing up or down
- Mounting brackets adjustable to fit 3"-8" (76-203 mm post width)
- Slots for equipment straps along the side of the shelf
- Can be mounted upside down

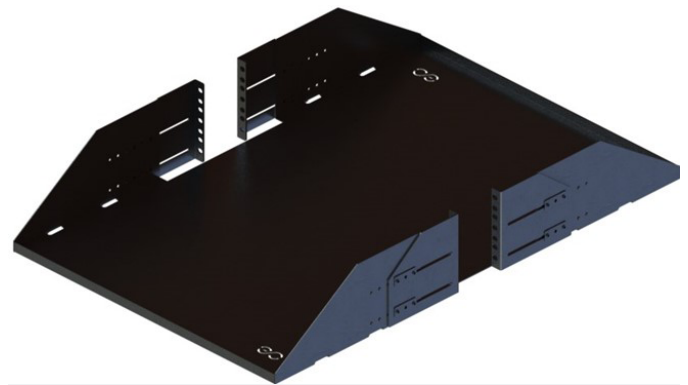


Figure 1 - 2-Post Fixed Shelf - ECX-FSF-2P3U750

PHYSICAL SPECIFICATIONS

Physical	Specs
Dimensions (DxWxH)	29.5" x 19" x 5.25" (750 x 482.6 x 133.35 mm)
Net Weight (lbs/kg)	13.86 lbs (6.3 kg)
Loading Capacity (lbs/kg)	250 lbs (113.6 kg)
Color	Black, RAL 9005
Material	CRS
Compatibility	19" 2-Post Rack
Shelf Type	Fixed Shelf
Conformance	EIA310