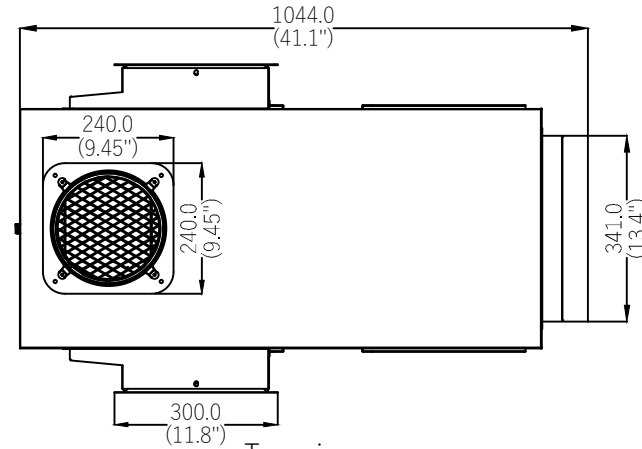
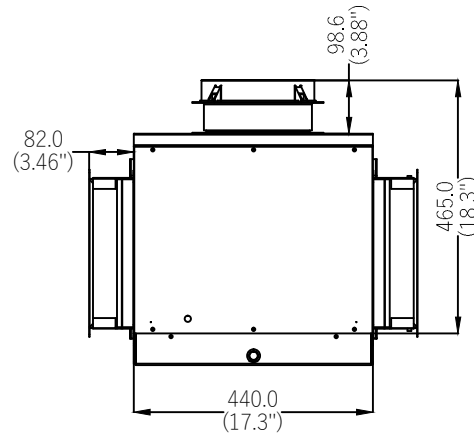


Notes/Instructions:

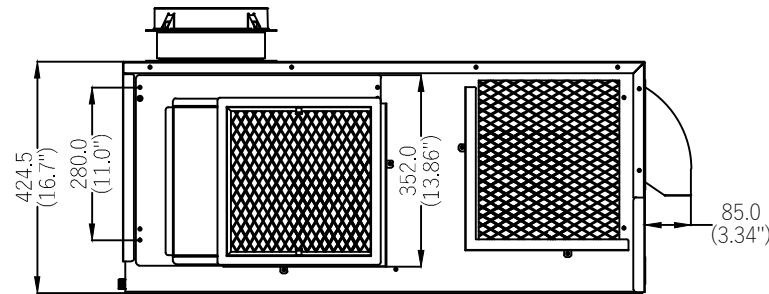
REV	REV DATE	DESCRIPTION	APPROVAL
A	2019-05-14	RELEASE	SD/RF



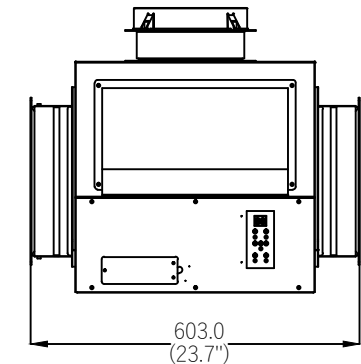
Top view



Rear view




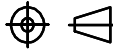
Side view



Front view

Notes:

This drawing and its specifications are the property of ENCONNEX and shall not be copied, reproduced, or used in whole or in part, as the basis for the manufacture or sale of items without written permission from ENCONNEX. This drawing is based upon the latest available information and is subject to change without notice.

TOLERANCES LINEAR (mm) X = ± 1 X.X = ± 0.5 X.XX = ± 0.30 X.XXX = ± 0.130 ANGULAR X = 1° .X = 0.5° .XX = 0.25°	MATERIAL: METAL	 4670 AIRCENTER CIRCLE, RENO, NV 89502	PART NUMBER: ECX-ER5M-45U60	
	FINISH:		DESCRIPTION: RCU (Rack Cooling Unit) 5Kw, 60Hz, 10U rackmount	
	DEBUR AND BREAK SHARP EDGES/CORNERS AT 0.2mm MAX	DRAWN BY: SAM DING	ORG DATE: 2019-05-14	
	INTERPRET TO ASME Y14.100	APPROVED BY: R. FAULKNER	REV DATE: 2019-05-14	
UNITS: mm [in]		SIZE: A4	SCALE: N/A	SHEET: 5/5
				REV: A