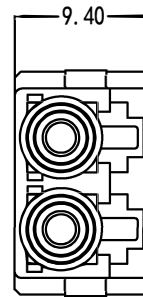
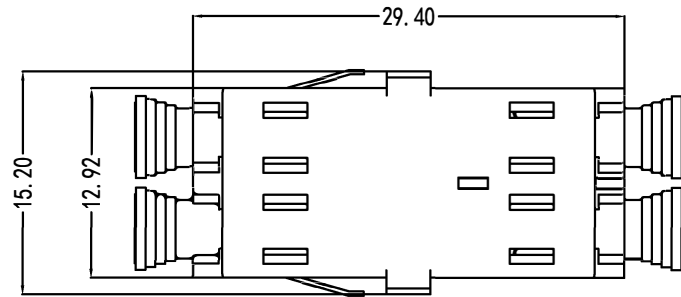


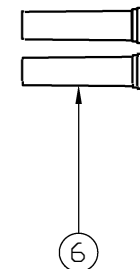
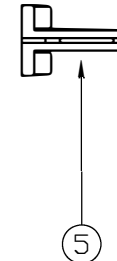
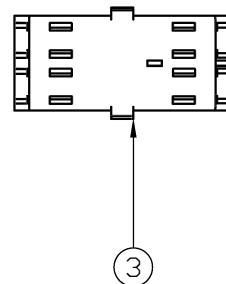
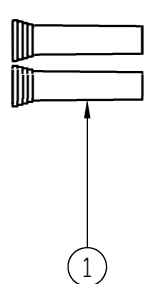
Tolerance			
Length	Super	High	Comm
<3	0.05	0.1	—
3T0<6	0.05	0.1	0.2
6T0<30	0.1	0.2	0.5
30T0<120	0.15	0.3	0.8
120T0<315	0.2	0.5	1.2

Version	Mark	Date	Before	Current
A0				



PART	MAT NO.	PAPT NAME	MAT.
1	FBK-ADAPTER-LC-001	LC-DUST CAP	PP
2	FBK-ADAPTER-002	SHRAPNEL	SUS304
3	FBK-ADAPTER-LC-011	OUTER HOUSER LC	PEI
4	FBK-ADAPTER-LC-004	SLEEVES LC	ZrO2
5	FBK-ADAPTER-LC-005	Sleeve Holder	PEI
6	FBK-ADAPTER-LC-001	LC-DUST CAP	PP

Parameter	LC-LC			
	SM	MM	APC	OM3
Insertion Loss(db)	≤0.25	≤0.25	≤0.25	≤0.25
Return Loss (db)	≥55	≥35	≥60	≥35
Mechanical Durability	>500			
Sleeve	ZrO2			
Operation wavelength	1310nm~1550nm~850nm			
Operating Temperature(°C)	-40~+100			
Storage Temperature (°C)	-40~+100			



UNIT	mm	PAGE	1/1	MODEL	LC
SCALE	2.000	DRAW	---	DRAW NO.	FBK-LC-01
MAT.		CHECK		NAME	FBK-ADAPTER-LC
DATE		APPR.		MAT_NO.	FBK-LC-01-1

VIEW



ENCONNEX

