

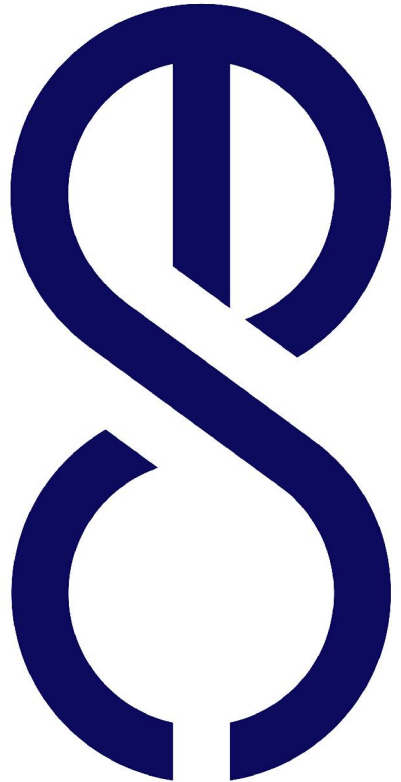
PROJECT: ECX-61245-2BAY

DRAWN BY: Amy Zhu

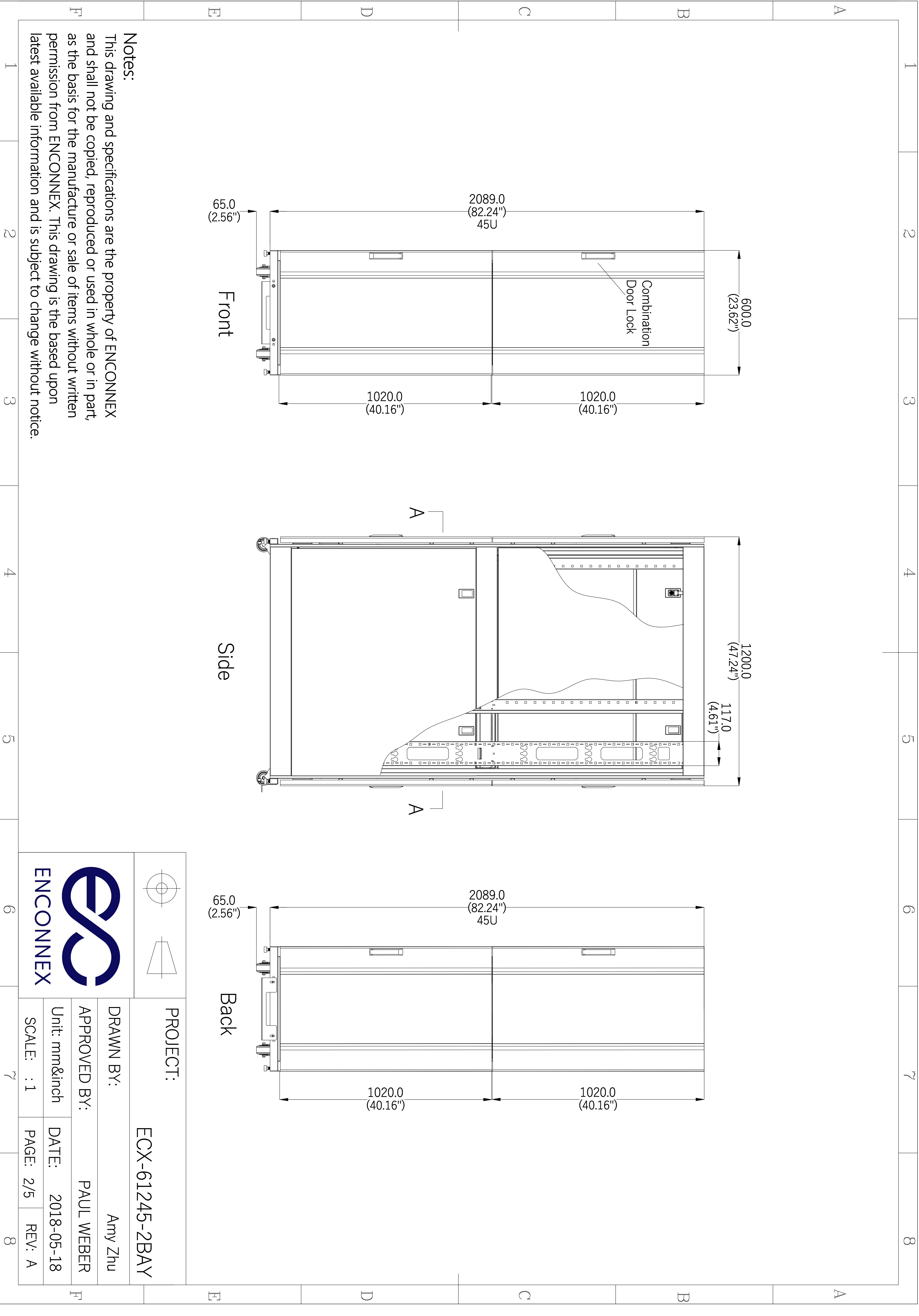
APPROVED BY: PAUL WEBER

Unit: mm&inch DATE: 2018-05-18

SCALE: 1 : 1 PAGE: 1/5 REV: A



ENCONNEX

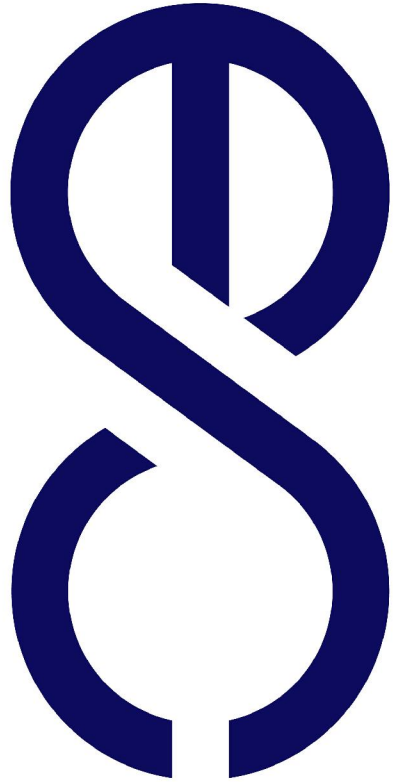


Notes:

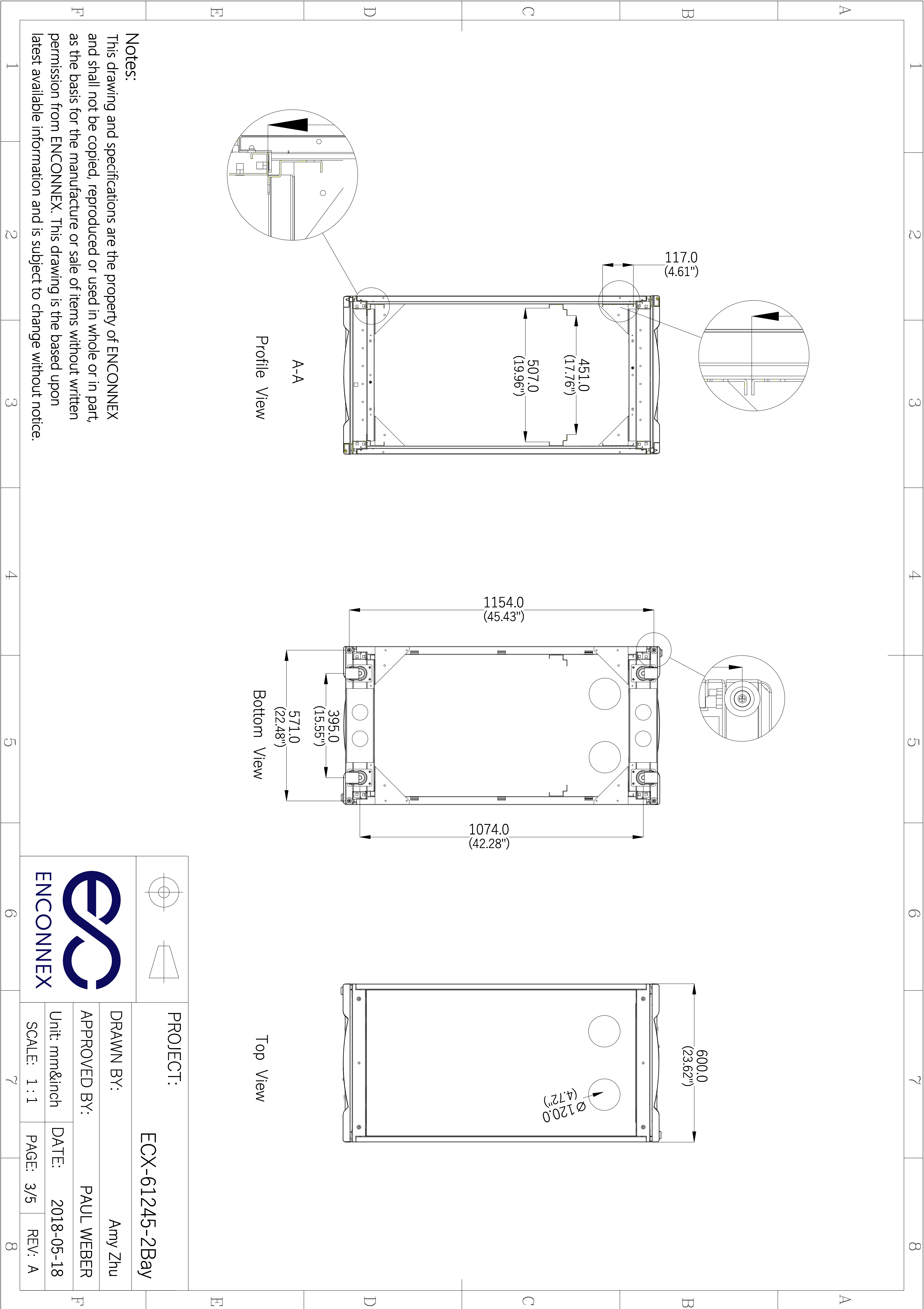
This drawing and specifications are the property of ENCONNEX and shall not be copied, reproduced or used in whole or in part, as the basis for the manufacture or sale of items without written permission from ENCONNEX. This drawing is the based upon latest available information and is subject to change without notice.

		PROJECT:	
		ECX-61245-2BAY	

DRAWN BY:		Amy Zhu	
APPROVED BY:		PAUL WEBER	
Unit: mm&inch	DATE:	2018-05-18	
SCALE: : 1	PAGE: 2/5	REV: A	



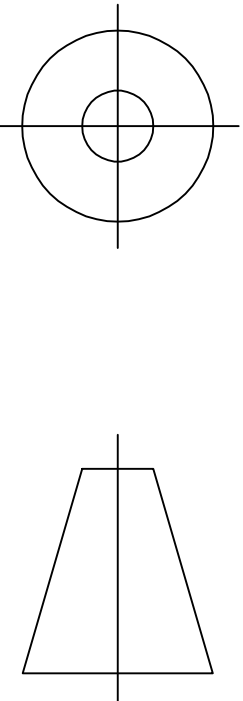
ENCONNEX



A-A
Profile View

Bottom View

Top View



PROJECT:

ECX-61245-2Bay

DRAWN BY:

Amy Zhu

APPROVED BY:

PAUL WEBER

Unit: mm&inch

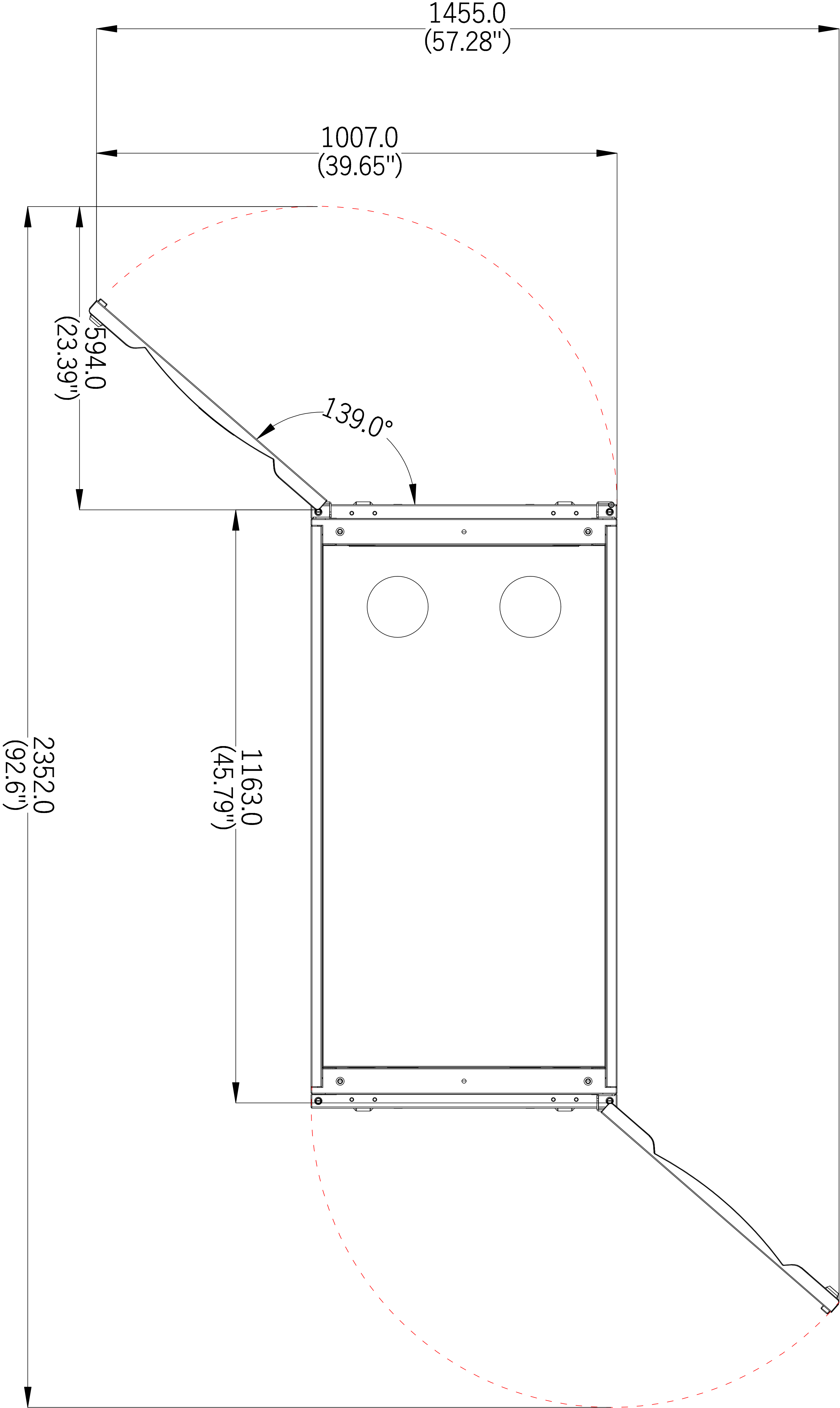
DATE: 2018-05-18

SCALE: 1 : 1

PAGE: 3/5

REV: A

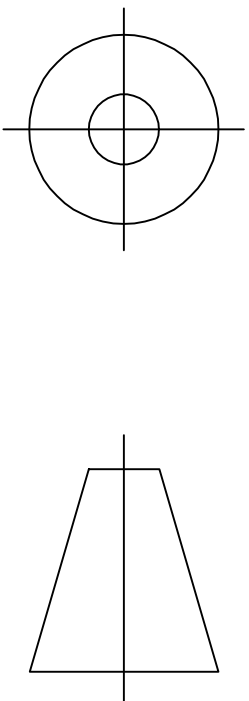




Top View
(Doors fully open)

Notes:

This drawing and specifications are the property of ENCONNEX and shall not be copied, reproduced or used in whole or in part, as the basis for the manufacture or sale of items without written permission from ENCONNEX. This drawing is the based upon latest available information and is subject to change without notice.



PROJECT:

ECX-61245-2BAY

DRAWN BY:

Amy Zhu

APPROVED BY:

PAUL WEBER

Unit: mm&inch

DATE: 2018-05-18

SCALE: 1 : 1

PAGE: 4/5

REV: A



1

2

3

4

5

6

7

8

1

2

3

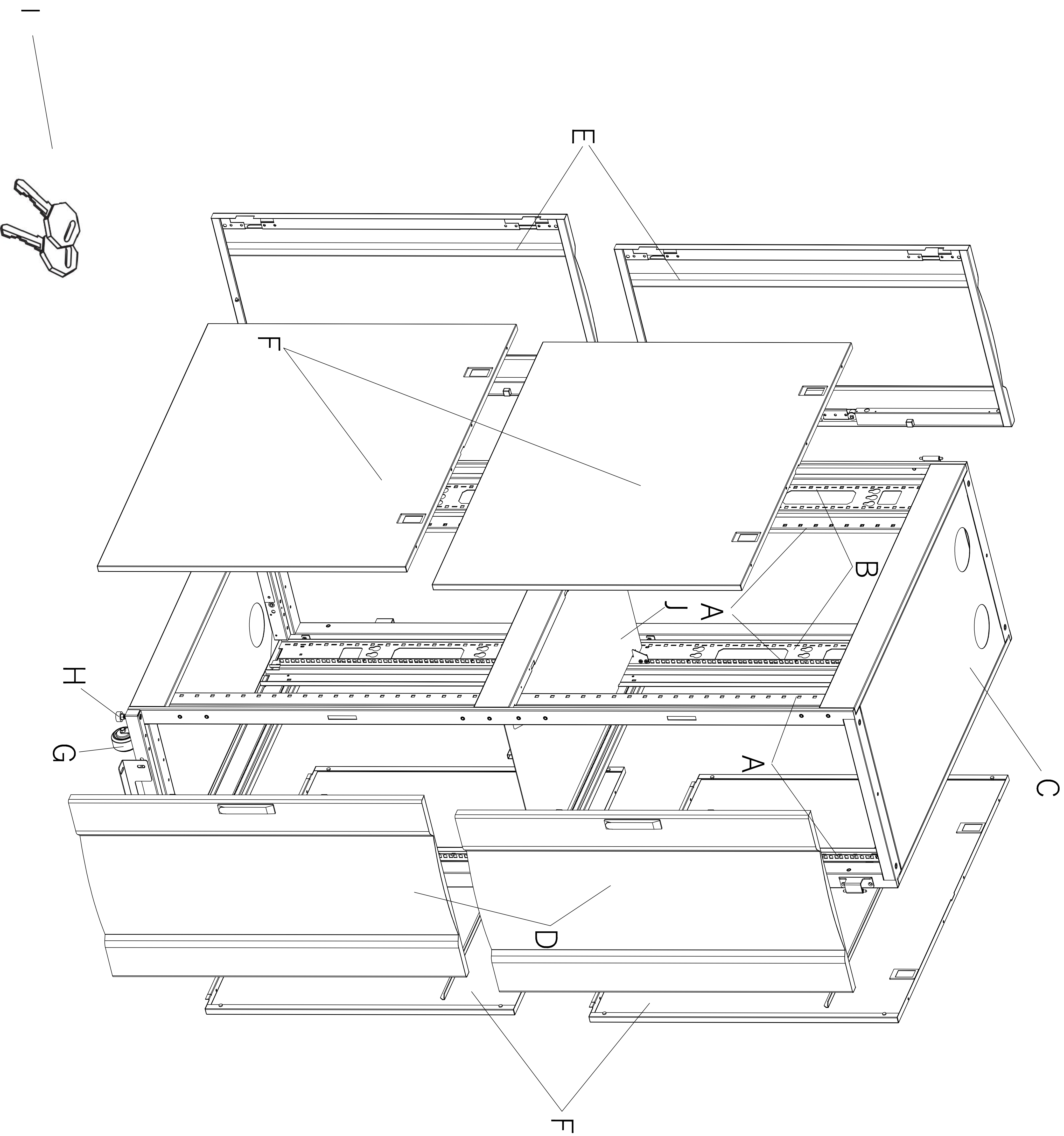
4

5

6

7

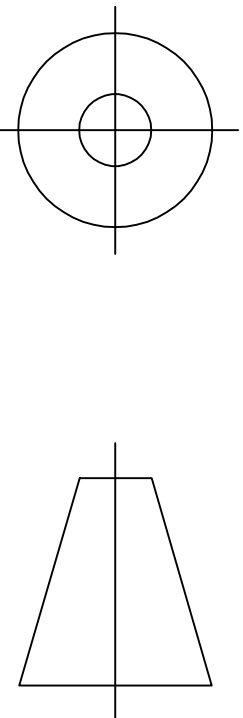
8



- A Adjustable Mounting Rails
- B Adjustable PDU Mounting Rails
- B Rails with Toolless Mounting Slots
- C Roof Panel (Removable)
- D Front Door
- D (Lockable/Removable/Reversible)
- E Split Rear Doors
- E (Lockable/removable)
- F Side Panels
- G Heavy-Duty Casters
- H Heavy-Duty Levelers
- I Keys
- I (For side panels)
- J Panel

Notes:

This drawing and specifications are the property of ENCONNEX and shall not be copied, reproduced or used in whole or in part, as the basis for the manufacture or sale of items without written permission from ENCONNEX. This drawing is the based upon latest available information and is subject to change without notice.



PROJECT:

ECX-61245-2BAY

DRAWN BY:

Amy Zhu

APPROVED BY:

PAUL WEBER

Unit: mm&inch

DATE: 2018-05-18

SCALE: 1 : 1

PAGE: 5/5 REV: A



ENCONNEX