

## MTP-LC 20F Multimode OM3

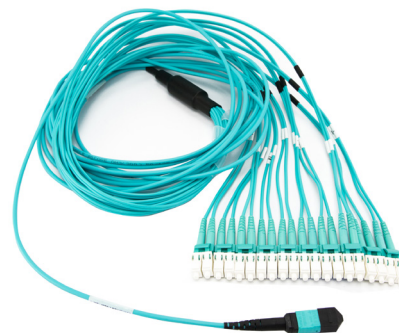
The Enconnex MTP-LC 20F Multimode OM3 patch cord is designed for use in all high-density applications and follows MPO standards. This fiber breakout cable is used to directly connect legacy CFP SR10 to (20) SFP+ SR ports. All Enconnex patch cords include a test report and are assigned a unique serial number for traceability.

### PRODUCT FEATURES

- 100% fully tested
- Low insertion and return loss
- Unique serial number label on each end
- Available in custom lengths and labeling

### PRODUCT SPECIFICATIONS

<b>Fiber Mode</b>	Multimode
<b>Fiber Counts</b>	20F
<b>Connector Type</b>	MTP-LC
<b>MTP Insertion Loss</b>	$\leq 0.60\text{dB}$
<b>LC Insertion Loss</b>	$\leq 0.20\text{dB}$
<b>MTP Return Loss</b>	$\geq -20\text{ dB}$
<b>LC Return Loss</b>	$\geq -50\text{ dB}$
<b>Operating Temperature</b>	-40°C - 85°C



# Part Number Matrix (Enconnex Fiber Cable)

## ORDERING INFORMATION

Use the part number matrix below to configure an Enconnex Fiber Cable. Choose 1) Connector Type, 2) Polish Type, 3) Fiber Type, 4) Fiber Count, 5) Jacket Type, 6) Length.

## EXAMPLE PART NUMBER

**E C X - M T M T 2 - 3 0 1 R - # # # F T**

1) Connector Type	Code
MTP/MTP	MTMT
MTP/MPO-LC	MTLC
LC-LC	LCLC
SC-SC	SCSC

2) Polish Type	Code
UPC	2
APC	3

3) Fiber Type	Code
OM3	3
OM4	4
SM	5

6) Length	Code
Feet	FT
Meters	M

5) Jacket Type	Code
Riser	R
Plenum	P

4) Fiber Count	Code
Simplex	01
Duplex	02
8 Fiber	08
12 Fiber	12
24 Fiber	24