

Containment Accessories - Fixed Ceiling Tile

SKU# ECX-212-FXD-CLG-001, ECX-218-FXD-CLG-001



www.enconnex.com

sales@enconnex.com

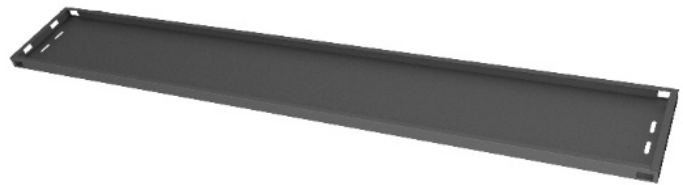
The Enconnex Fixed Ceiling Tile provides a stable mounting space for camera, horn and strobe at the middle or end of the containment row.

APPLICATIONS

- Data Centers
- Lab Environments
- High-density applications
- Energy rebate programs

PRODUCT FEATURES

- Space for camera, horn and strobe mounting



PHYSICAL SPECIFICATIONS	ECX-212-FXD-CLG-001	CX-218-FXD-CLG-001
Physical Dimensions (inch/mm)	54" x 1.1" x 7.8" (1372.8 x 27 x 199 mm)	78" x 1.1" x 7.8" (1982 x 27 x 199 mm)
Net Weight (lbs/kg)	5.64 lbs (2.56 kg)	10.58 lbs (4.8 kg)
Aisle Width	1200 mm	1800 mm
Color	Black	Black